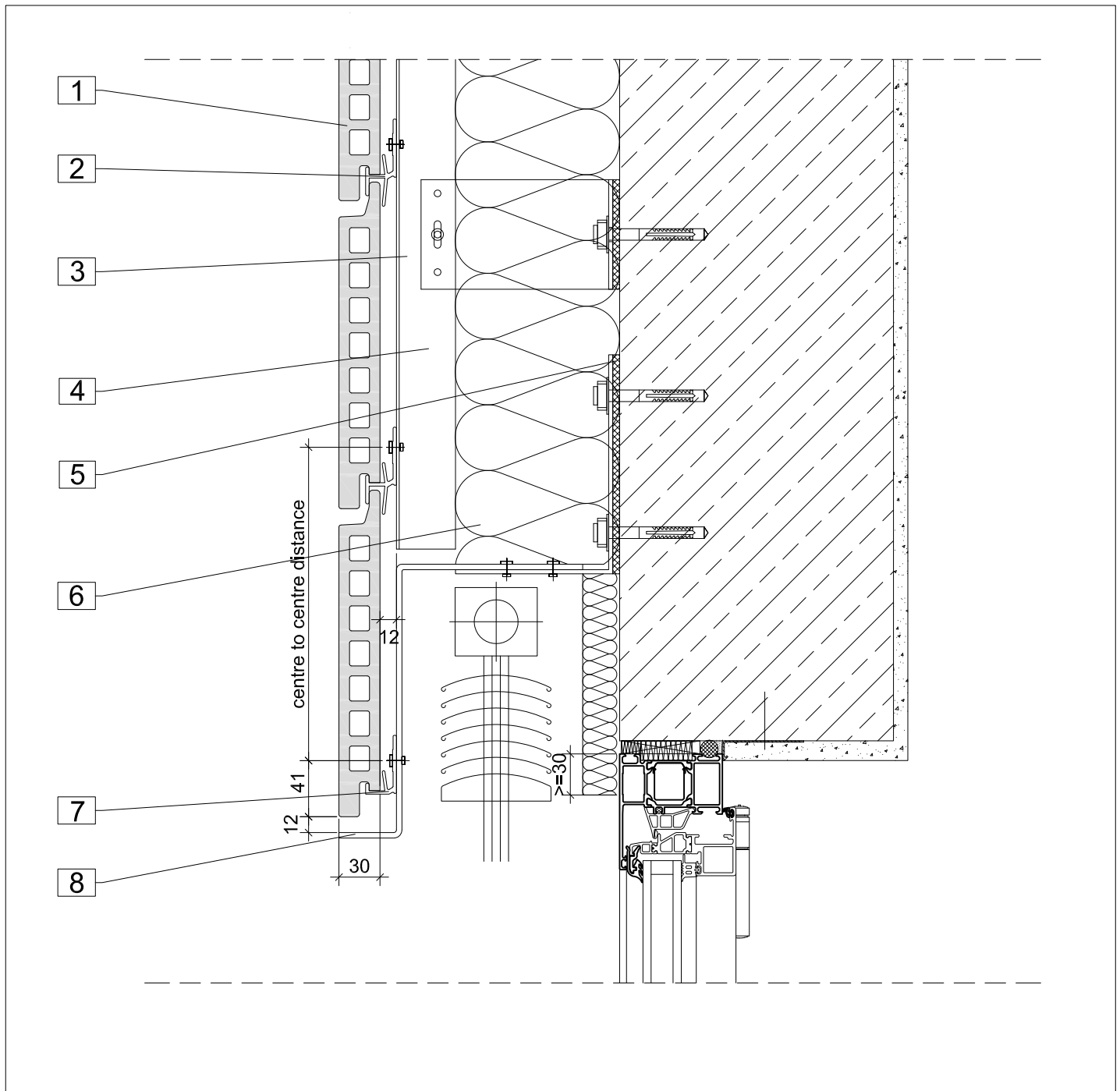


Lintel section with anti-glare shield - option 2

05 / 2015



- | | |
|--------------------------------|------------------------------|
| 1. Argeton tile plate | 6. Insulation |
| 2. Middle clip | 7. Bottom clip |
| 3. Aluminium profile, vertical | 8. Sheet, canted (two parts) |
| 4. Aluminium cleat | |
| 5. Thermal separation | |

Notes

The details shown are simplified technical suggestions. The planning and realisation of the facade design are carried out building-specifically and in particular cases are to be adapted to the country building codes and guidelines.