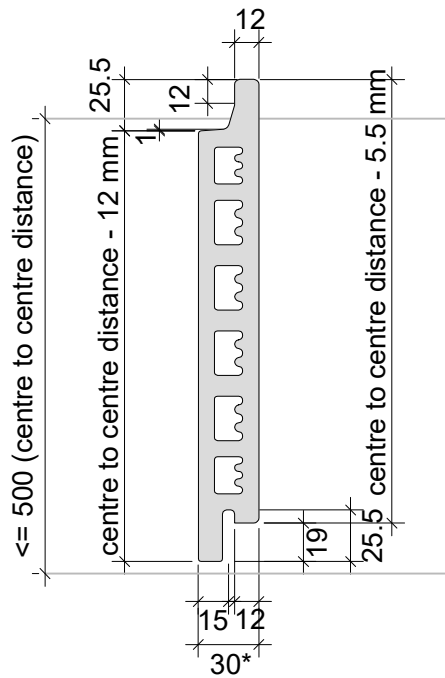
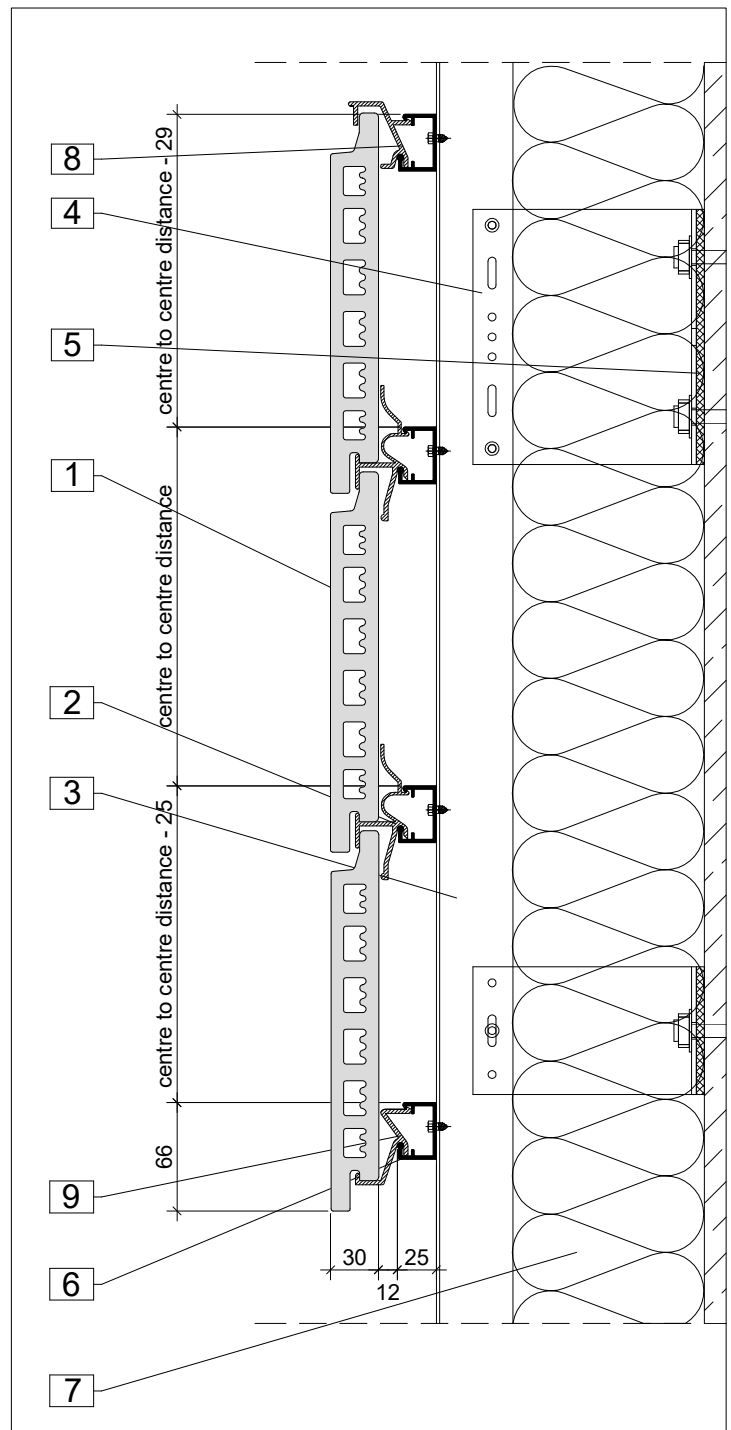
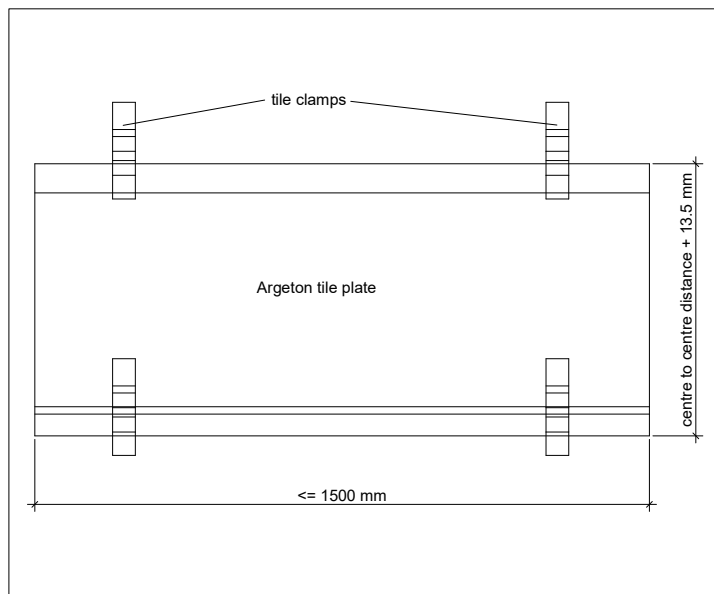


Dimensions of the system

02 / 2020



* tile height > 400mm:
tile thickness = 35mm

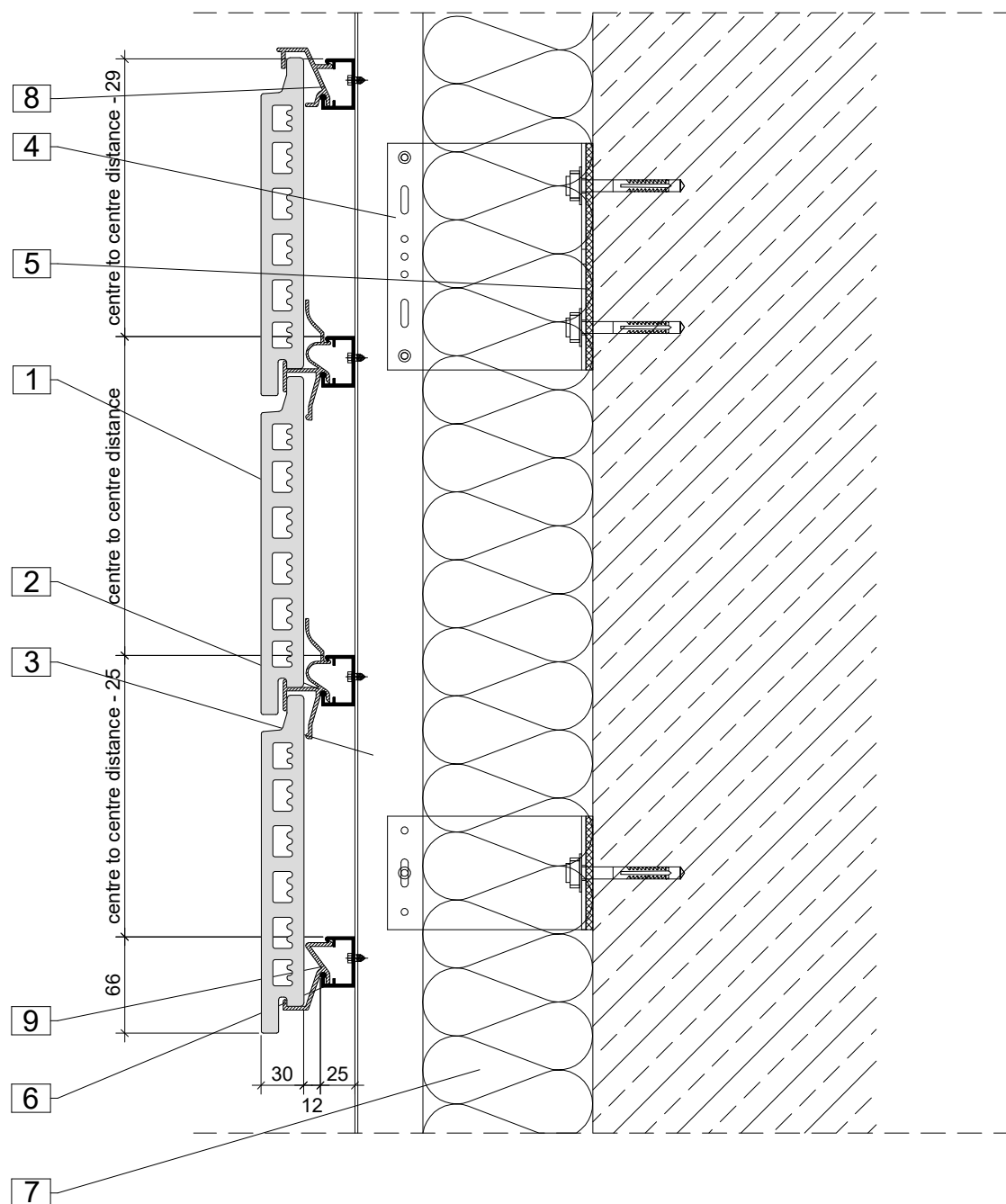


- | | |
|--------------------------------|---------------------------------------|
| 1. Argeton tile plate | 6. Aluminium carrier rail, horizontal |
| 2. Middle clamp | 7. Insulation |
| 3. Aluminium profile, vertical | 8. Top clamp |
| 4. Aluminium cleat | 9. Bottom clamp |
| 5. Thermal separation | |

| | |
|-------------|---|
| H-UK_10 | Normal section |
| H-UK_11.1 | Building corner with mitred corner |
| H-UK_11.2 | Building corner with mitred corner (and corner profile) |
| H-UK_11.3 | Building corner with corner profile (closed) |
| H-UK_11.4 | Building corner with corner profile (open) |
| H-UK_11.5 | Building corner with corner profile (half-round) |
| H-UK_11.6.1 | Building corner Argeton / plaster (with mitred tile plate) |
| H-UK_11.6.2 | Building corner Argeton / plaster (with canted sheet) |
| H-UK_11.6.3 | Building corner Argeton / plaster (with canted sheet) |
| H-UK_11.7.1 | Encompassing building corner with corner profile (half-round) |
| H-UK_11.7.2 | Encompassing building corner with mitred tile plates |
| H-UK_12.1 | Internal corner Argeton facade / plaster |
| H-UK_12.2 | Internal corner with squared up tile plates |
| H-UK_13.1 | Reveal section with sheet |
| H-UK_13.2 | Reveal section with mitred tile plates |

| | |
|--------------------------------|-----------|
| Horizontal substructure | |
| Vertical facade cross sections | |
| | 02 / 2020 |

| | |
|-------------|--|
| H-UK_01 | Assembly schedule |
| H-UK_02 | Fixing point |
| H-UK_03 | Sliding point |
| H-UK_04 | Bottom junction |
| H-UK_05 | Top junction |
| H-UK_06 | Sill section |
| H-UK_07.1 | Lintel section with sheet |
| H-UK_07.2.1 | Lintel section with anti-glare shield - option 1 |
| H-UK_07.2.2 | Lintel section with anti-glare shield - option 2 |
| H-UK_07.3 | Lintel section with Argeton tile plate |
| H-UK_08 | Intersection Argeton facade / plaster |
| H-UK_09 | Intersection Argeton facade / Argeton ceiling |

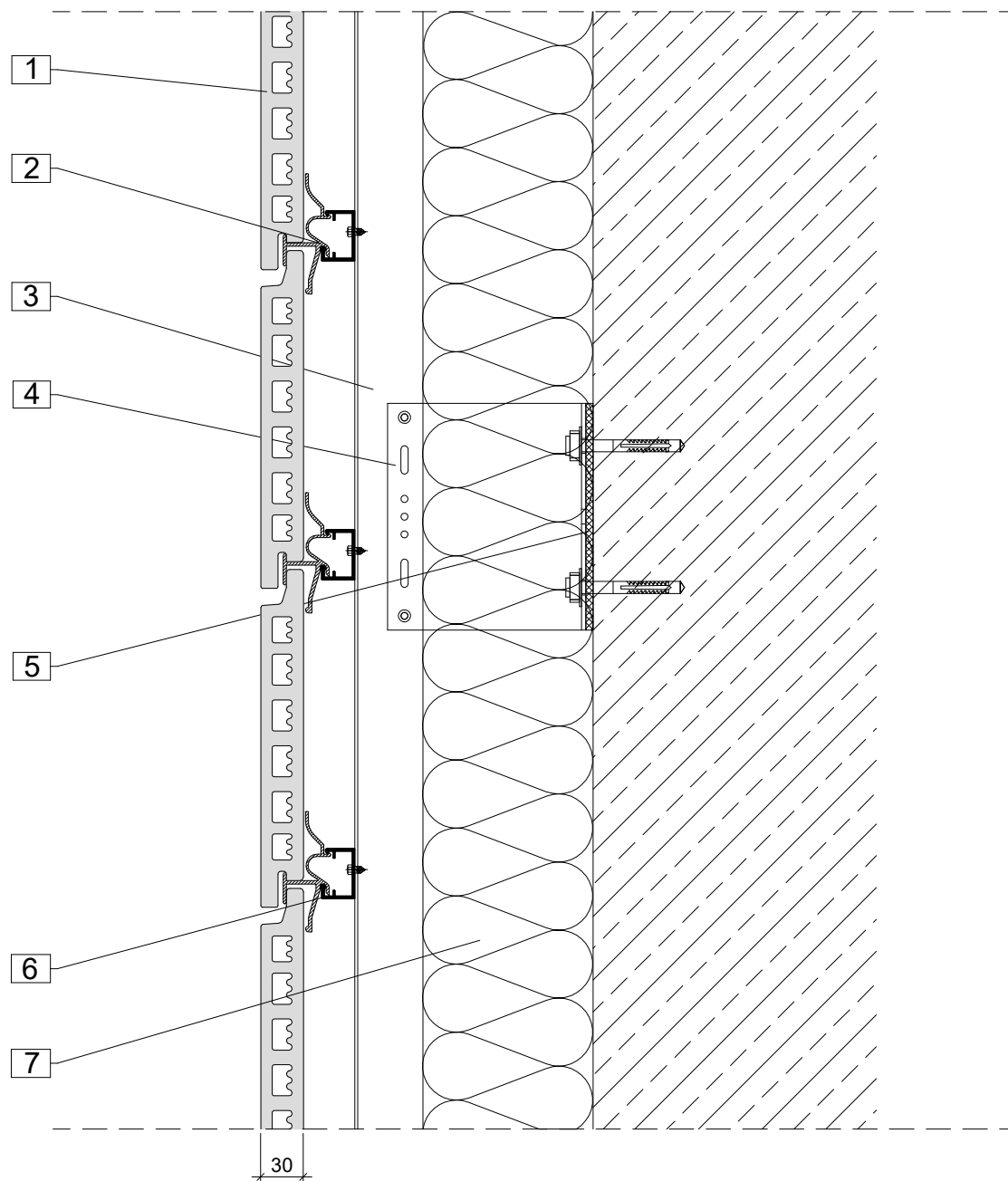


1. Argeton tile plate
2. Middle clamp
3. Aluminium profile, vertical
4. Aluminium cleat
5. Thermal separation

6. Aluminium carrier rail, horizontal
7. Insulation
8. Top clamp
9. Bottom clamp

Notes

The details shown are simplified technical suggestions. The planning and realisation of the facade design are carried out building-specifically and in particular cases are to be adapted to the country building codes and guidelines.

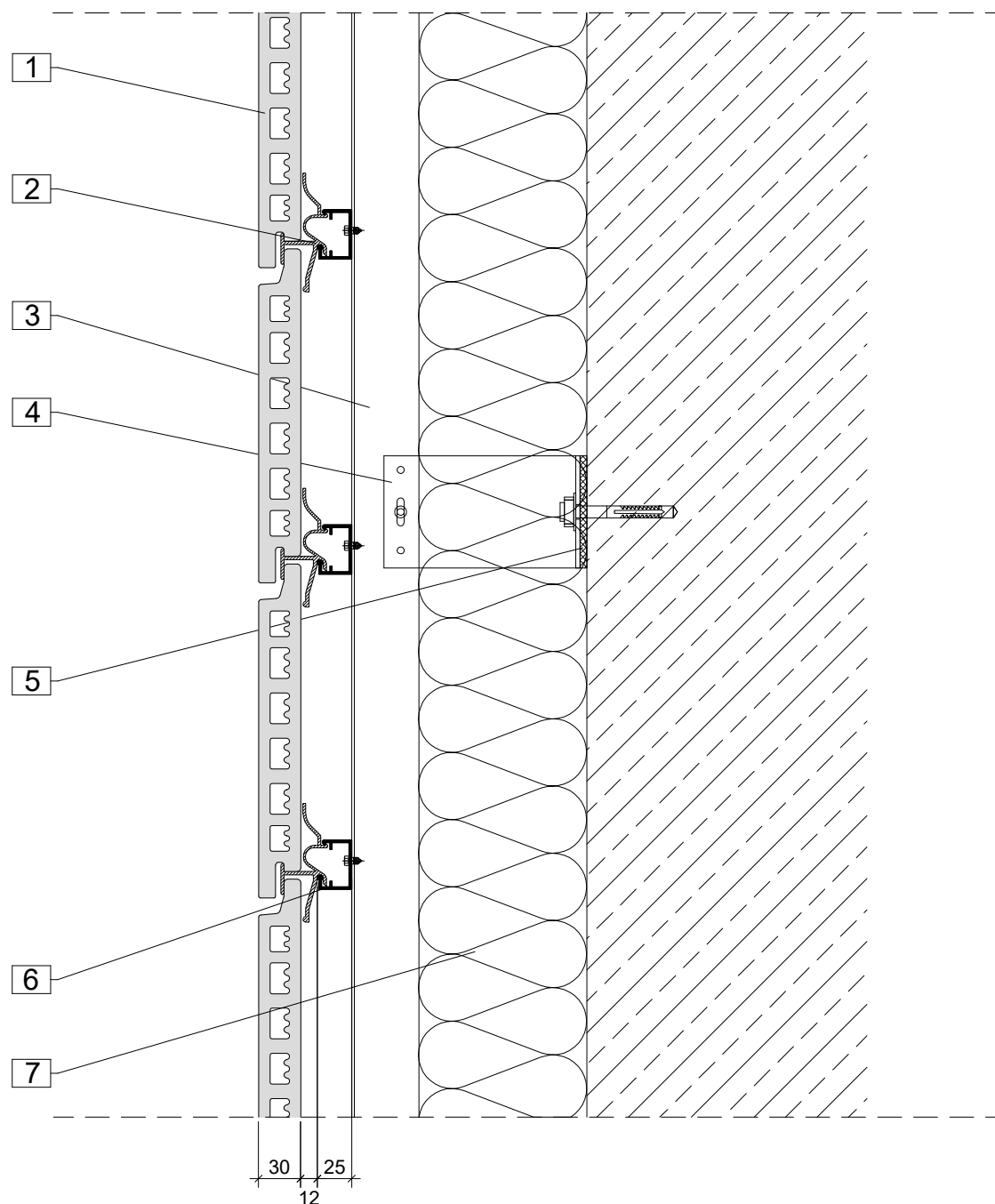


1. Argeton tile plate
2. Middle clamp
3. Aluminium profile, vertical
4. Aluminium cleat
5. Thermal separation

6. Aluminium carrier rail, horizontal
7. Insulation

Notes

The details shown are simplified technical suggestions. The planning and realisation of the facade design are carried out building-specifically and in particular cases are to be adapted to the country building codes and guidelines.

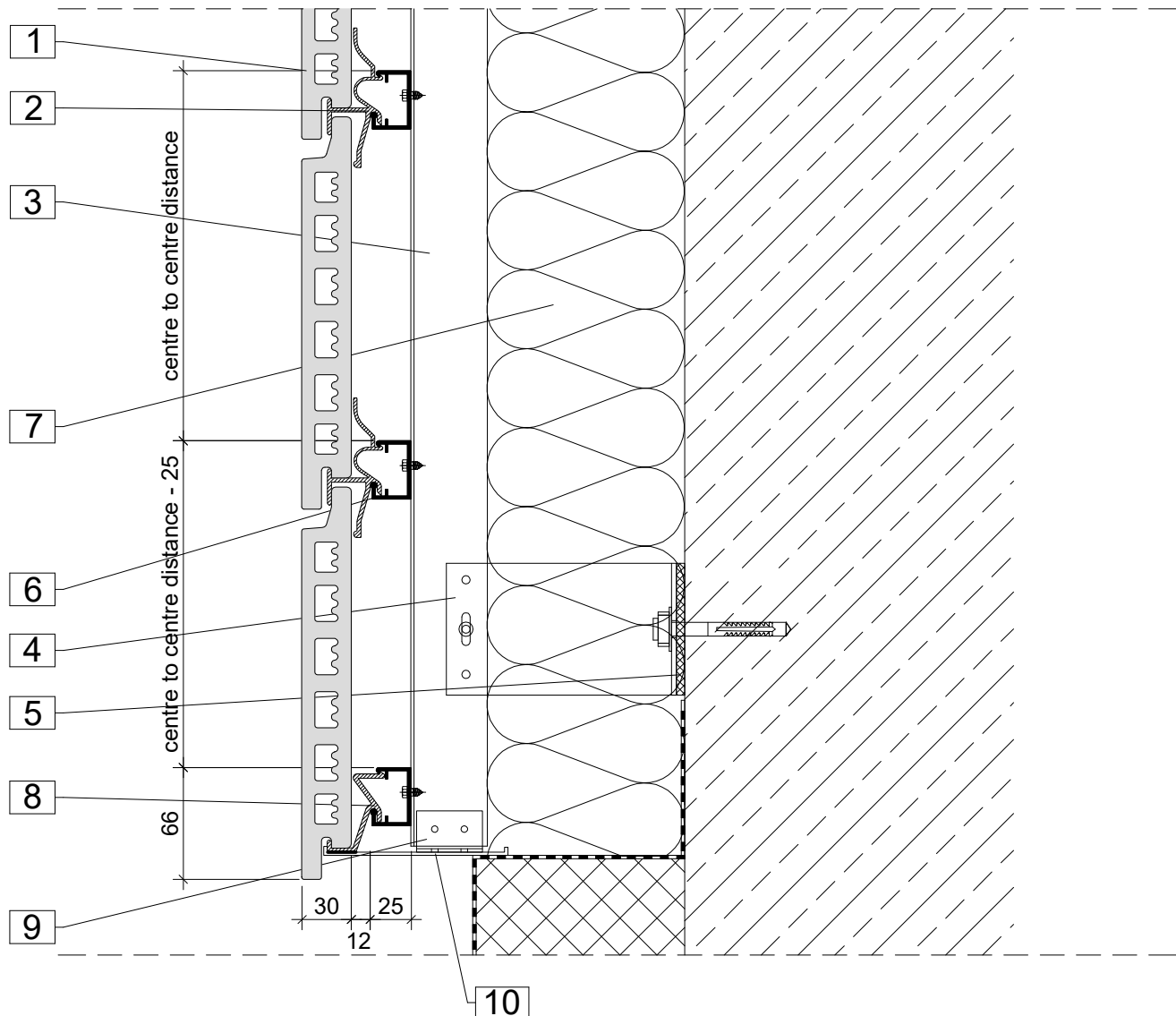


1. Argeton tile plate
2. Middle clamp
3. Aluminium profile, vertical
4. Aluminium cleat
5. Thermal separation

6. Aluminium carrier rail, horizontal
7. Insulation

Notes

The details shown are simplified technical suggestions. The planning and realisation of the facade design are carried out building-specifically and in particular cases are to be adapted to the country building codes and guidelines.

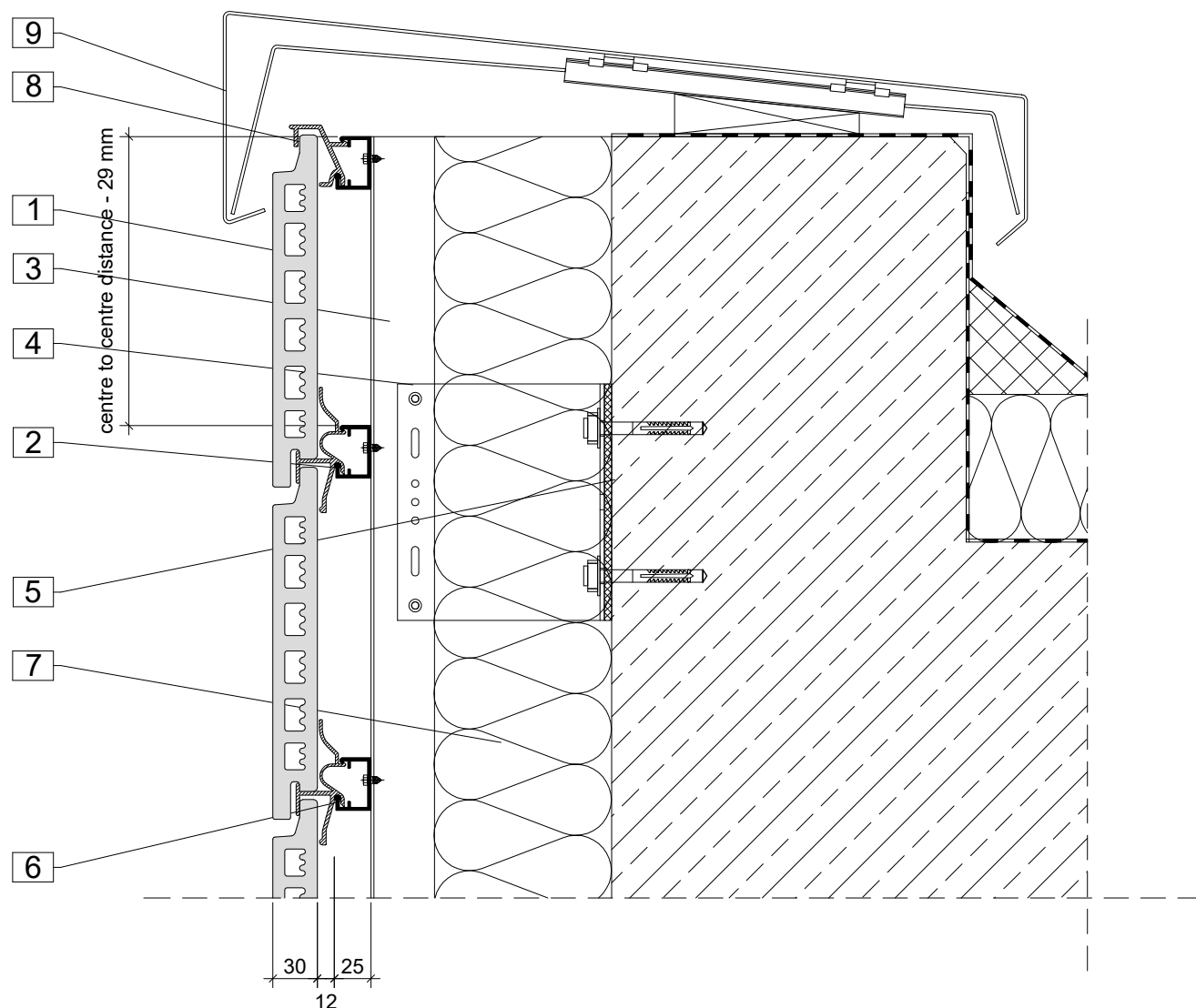


1. Argeton tile plate
2. Middle clamp
3. Aluminium profile, vertical
4. Aluminium cleat
5. Thermal separation

6. Aluminium carrier rail, horizontal
7. Insulation
8. Bottom clamp
9. Fastening angle
10. Perforated sheet

Notes

The details shown are simplified technical suggestions. The planning and realisation of the facade design are carried out building-specifically and in particular cases are to be adapted to the country building codes and guidelines.

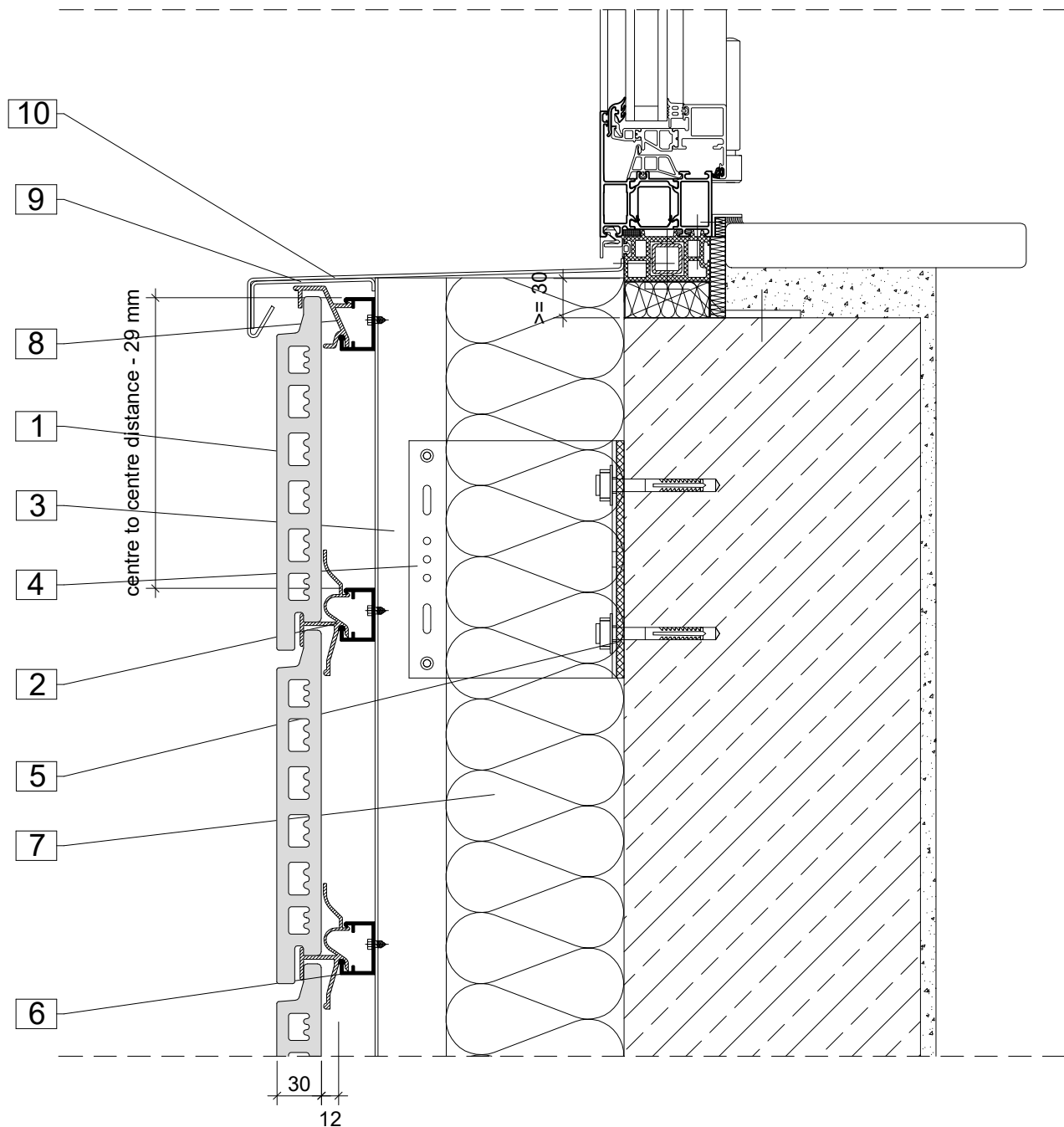


1. Argeton tile plate
2. Middle clamp
3. Aluminium profile, vertical
4. Aluminium cleat
5. Thermal separation

6. Aluminium carrier rail, horizontal
7. Insulation
8. Top clamp
9. Parapet sheet, canted

Notes

The details shown are simplified technical suggestions. The planning and realisation of the facade design are carried out building-specifically and in particular cases are to be adapted to the country building codes and guidelines.

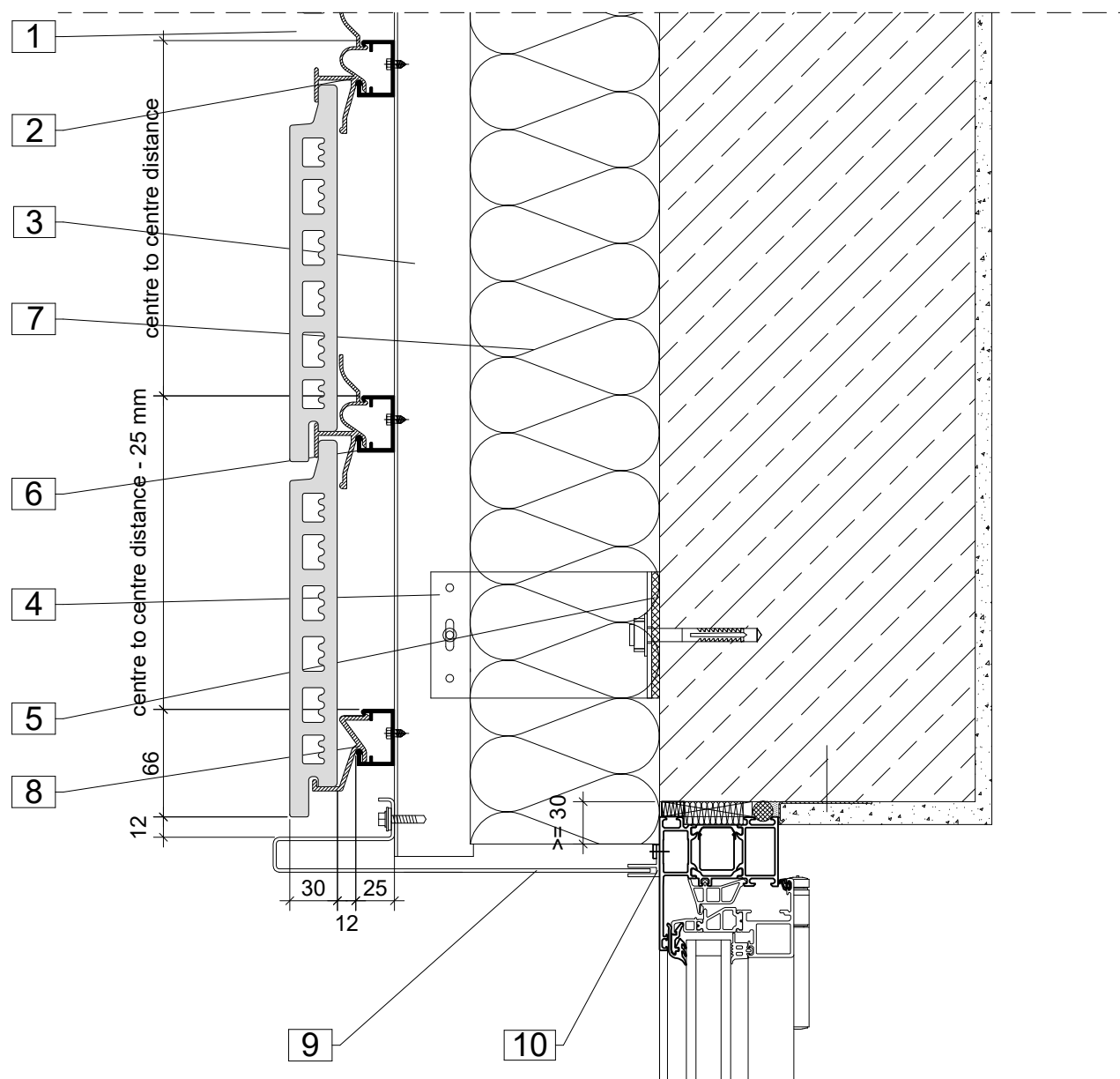


1. Argeton tile plate
2. Middle clamp
3. Aluminium profile, vertical
4. Aluminium cleat
5. Thermal separation

6. Aluminium carrier rail, horizontal
7. Insulation
8. Top clamp
9. Fixing bracket
10. Windowsill

Notes

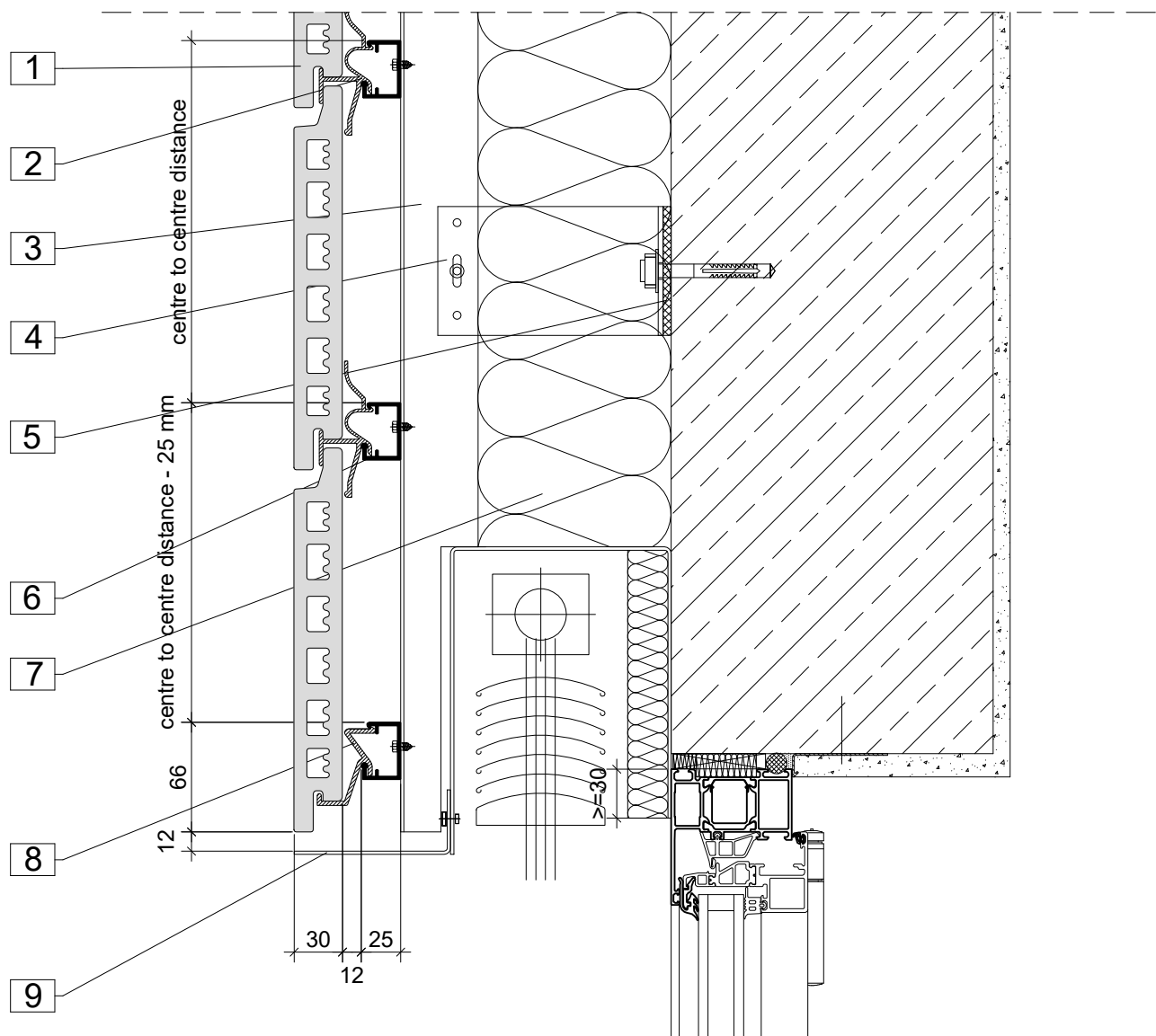
The details shown are simplified technical suggestions. The planning and realisation of the facade design are carried out building-specifically and in particular cases are to be adapted to the country building codes and guidelines.



1. Argeton tile plate
2. Middle clamp
3. Aluminium profile, vertical
4. Aluminium cleat
5. Thermal separation
6. Aluminium carrier rail, horizontal
7. Insulation
8. Bottom clamp
9. Sheet, canted
10. F insertion profile

Notes

The details shown are simplified technical suggestions. The planning and realisation of the facade design are carried out building-specifically and in particular cases are to be adapted to the country building codes and guidelines.



1. Argeton tile plate
2. Middle clamp
3. Aluminium profile, vertical
4. Aluminium cleat
5. Thermal separation

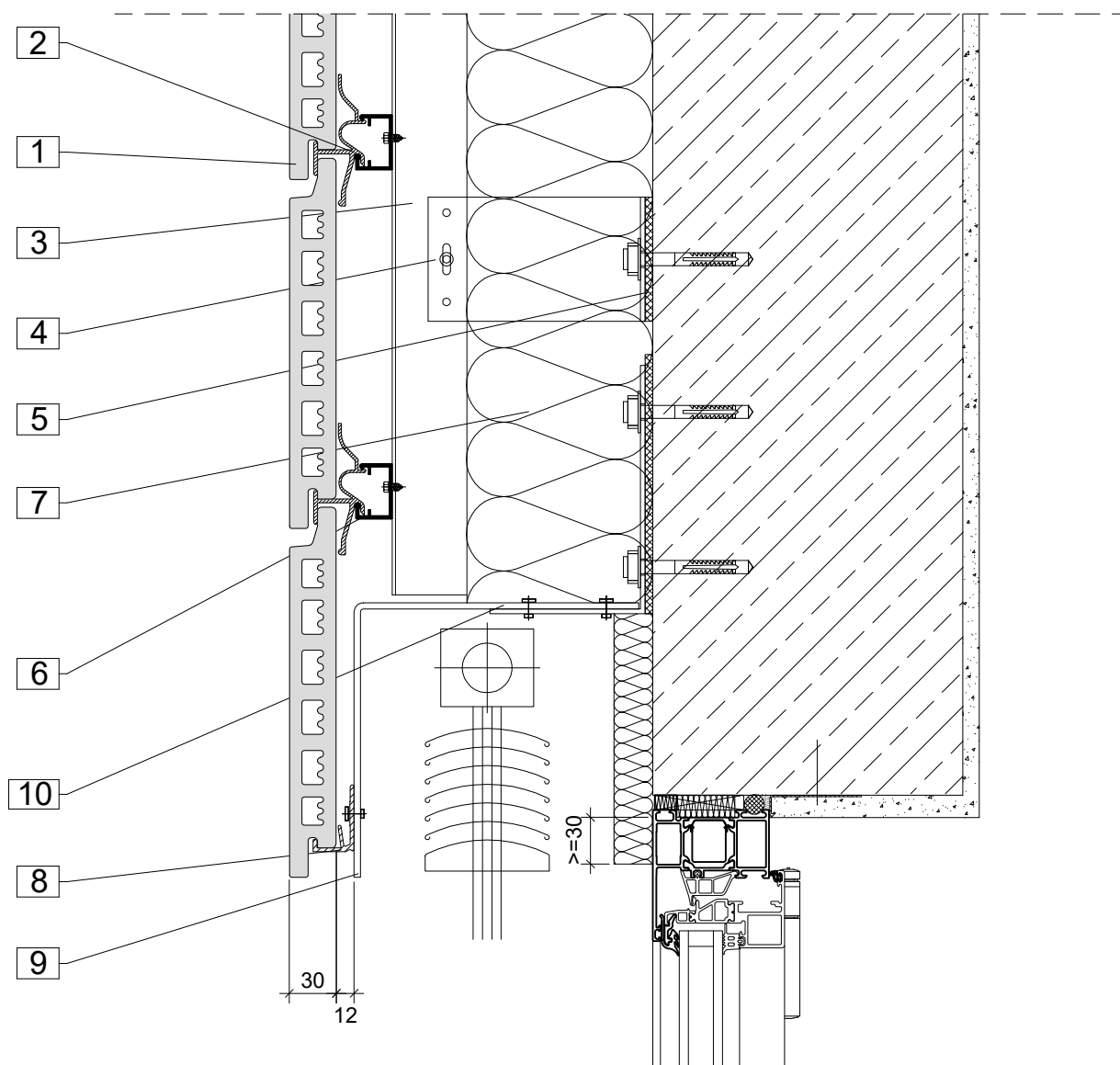
6. Aluminium carrier rail, horizontal
7. Insulation
8. Bottom clamp
9. Sheet, canted

Notes

The details shown are simplified technical suggestions. The planning and realisation of the facade design are carried out building-specifically and in particular cases are to be adapted to the country building codes and guidelines.

Lintel section with anti-glare shield, option 2

02 / 2020

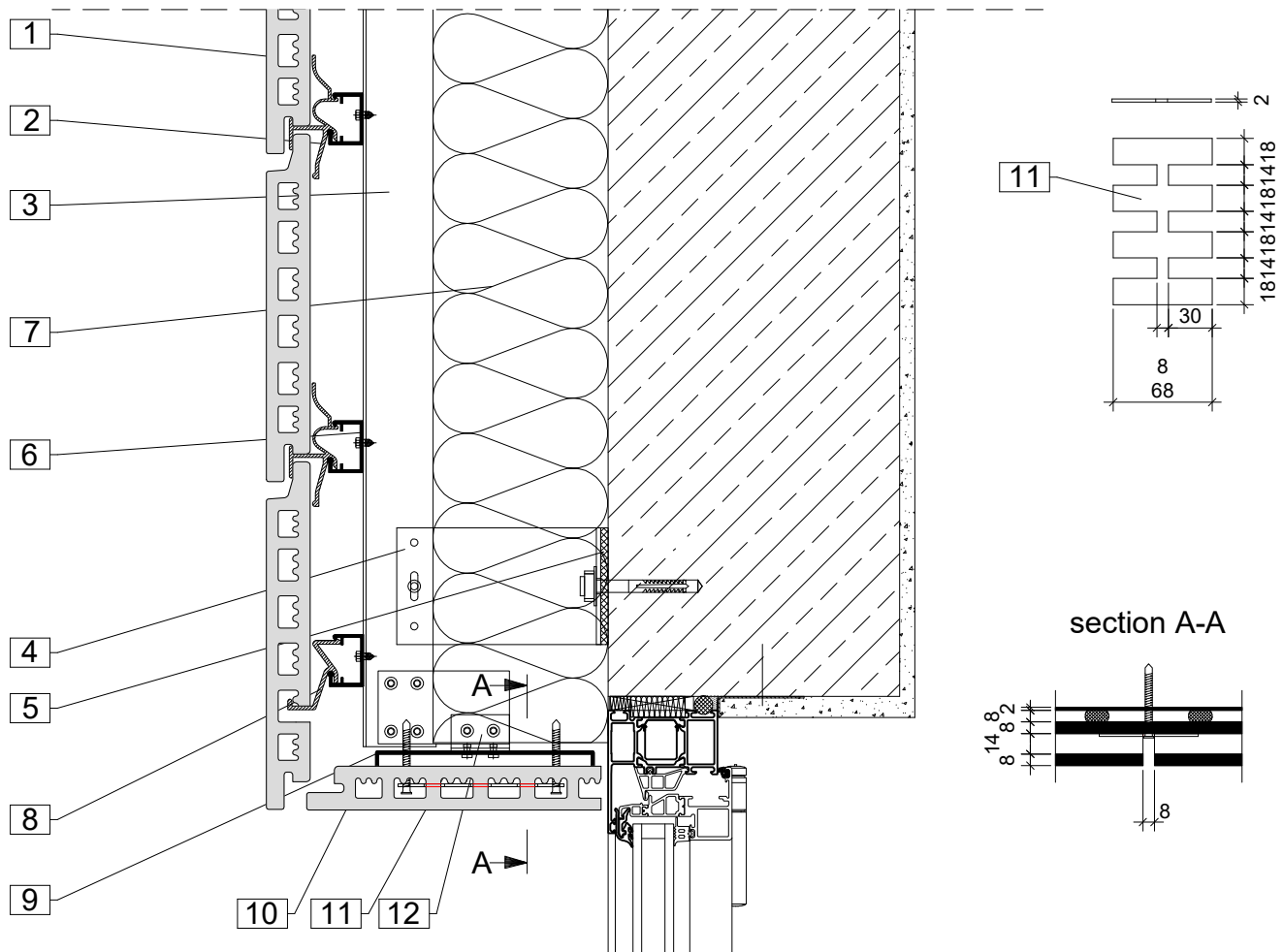


1. Argeton tile plate
2. Middle clamp
3. Aluminium profile, vertical
4. Aluminium cleat
5. Thermal separation

6. Aluminium carrier rail, horizontal
7. Insulation
8. Bottom clamp
9. Sheet, canted
10. Fastening angle

Notes

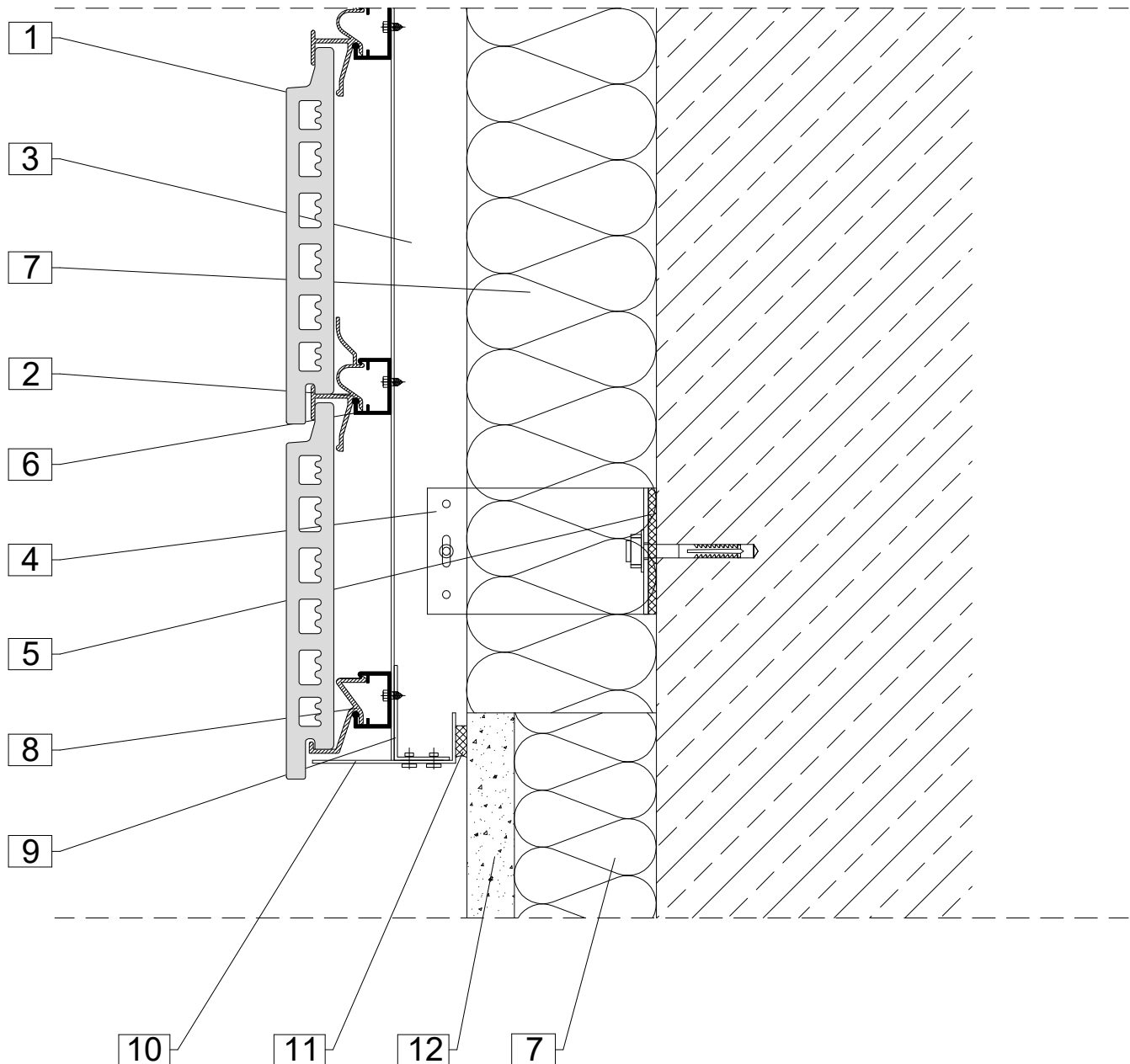
The details shown are simplified technical suggestions. The planning and realisation of the facade design are carried out building-specifically and in particular cases are to be adapted to the country building codes and guidelines.



1. Argeton tile plate
2. Middle clamp
3. Aluminium profile, vertical
4. Aluminium cleat
5. Thermal separation
6. Aluminium carrier rail, horizontal
7. Insulation
8. Bottom clamp
9. Sheet, canted
10. Argeton tile plate
11. Holding plate
12. Fastening angle

Notes

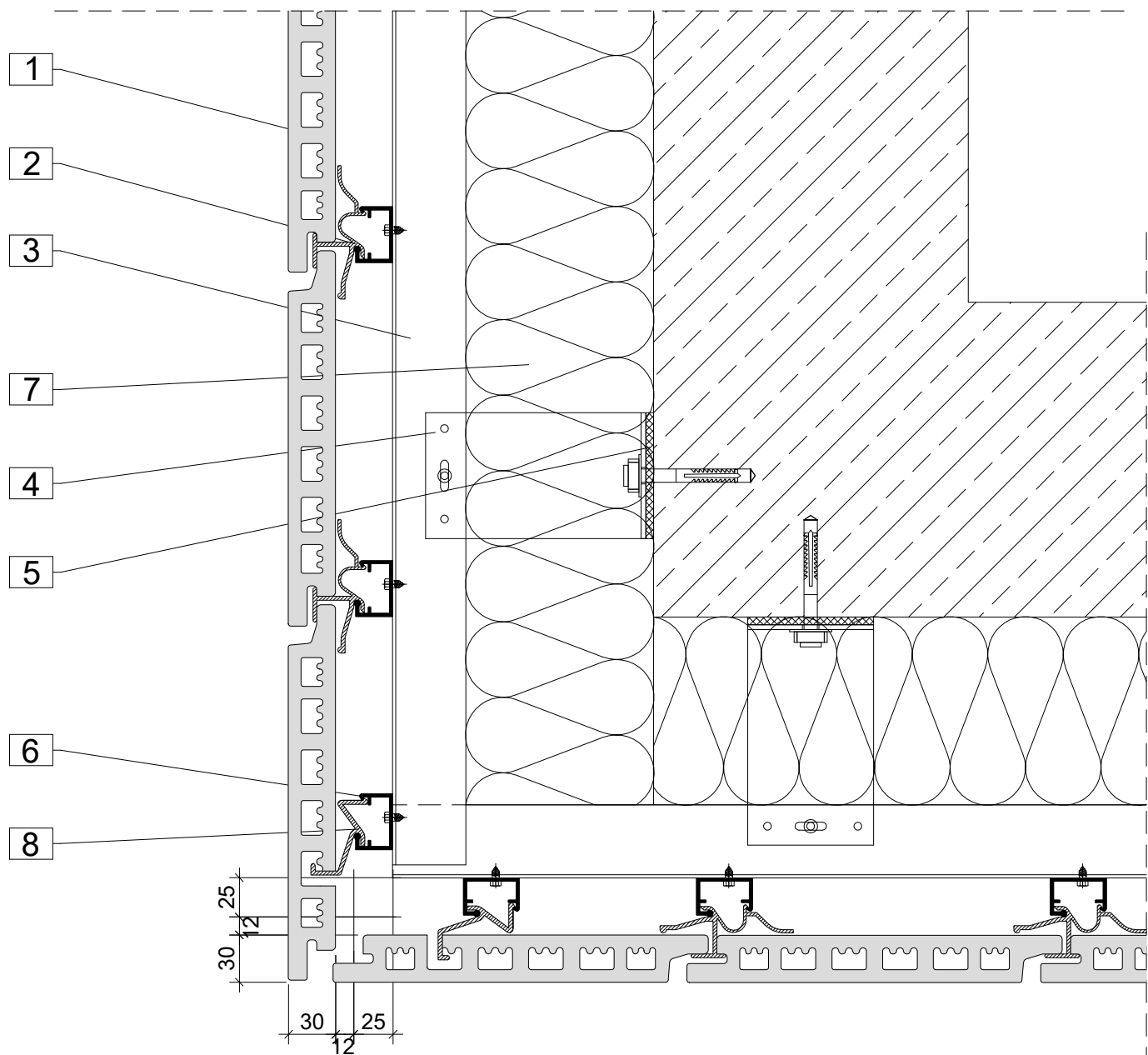
The details shown are simplified technical suggestions. The planning and realisation of the facade design are carried out building-specifically and in particular cases are to be adapted to the country building codes and guidelines.



1. Argeton tile plate
2. Middle clamp
3. Aluminium profile, vertical
4. Aluminium cleat
5. Thermal separation
6. Aluminium carrier rail, horizontal
7. Insulation
8. Bottom clamp
9. Fastening angle
10. Sheet, canted
11. Sealing tape
12. Plaster

Notes

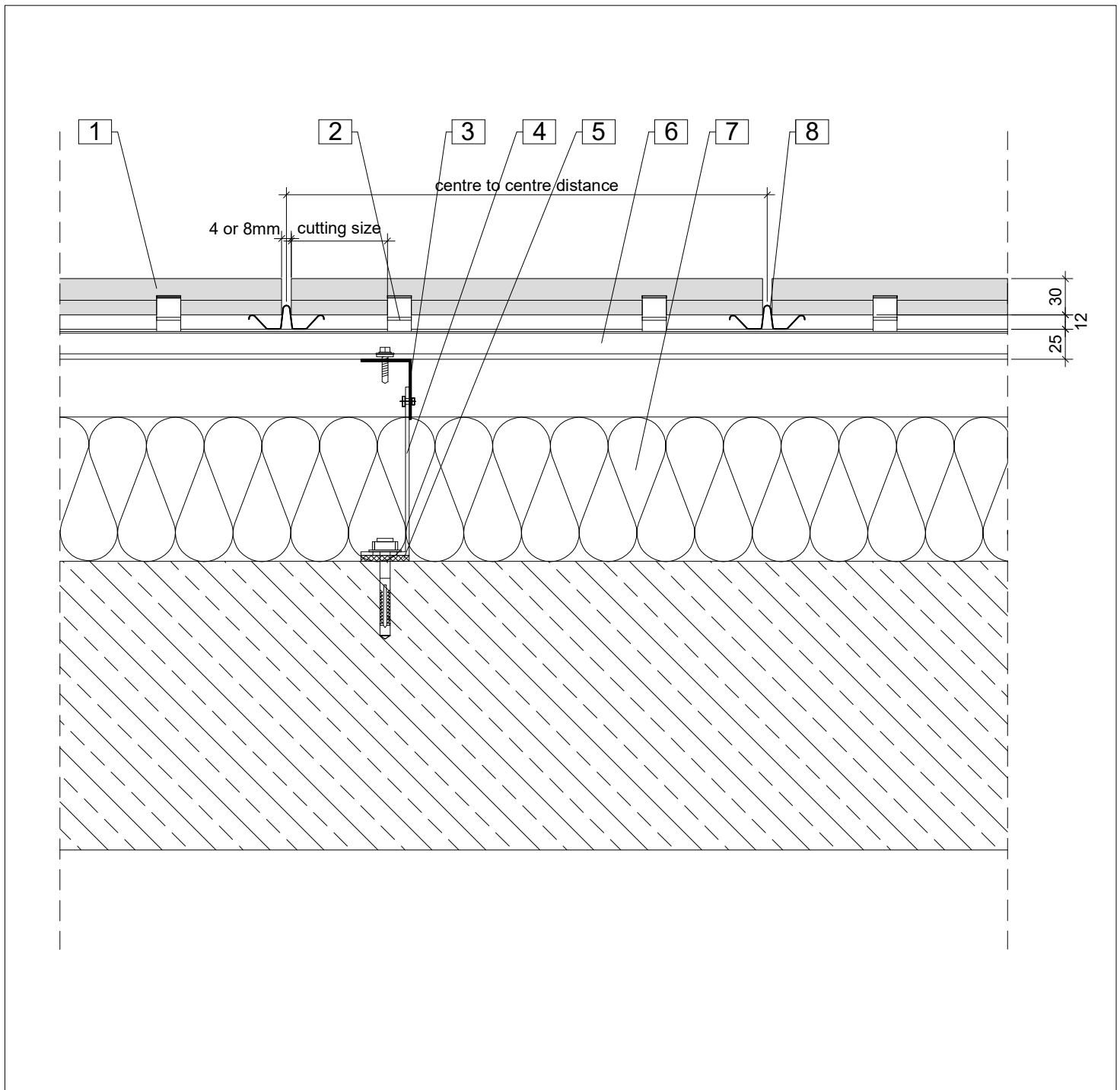
The details shown are simplified technical suggestions. The planning and realisation of the facade design are carried out building-specifically and in particular cases are to be adapted to the country building codes and guidelines.



1. Argeton tile plate
2. Middle clamp
3. Aluminium profile, vertical
4. Aluminium cleat
5. Thermal separation
6. Aluminium carrier rail, horizontal
7. Insulation
8. Bottom clamp

Notes

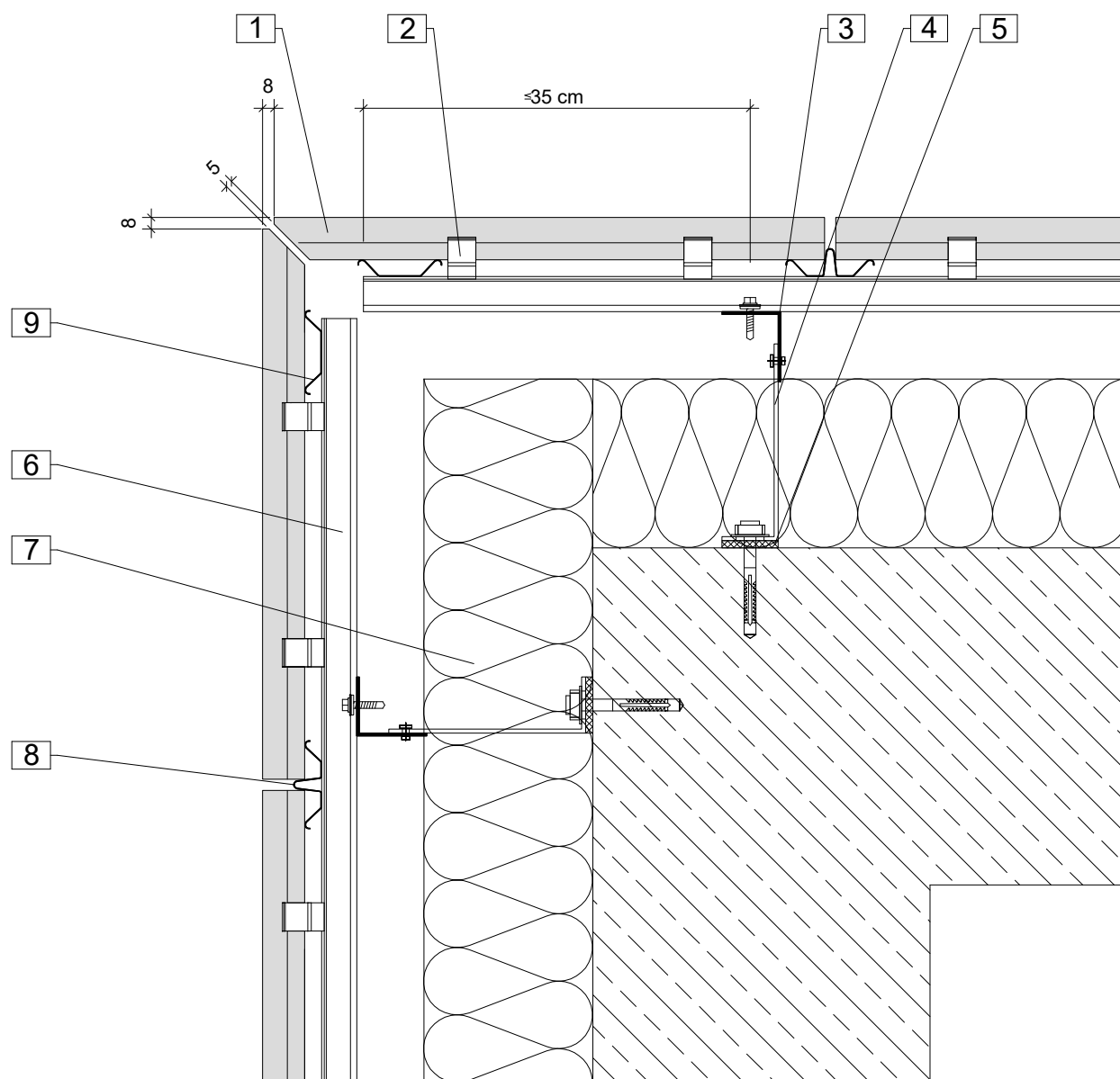
The details shown are simplified technical suggestions. The planning and realisation of the facade design are carried out building-specifically and in particular cases are to be adapted to the country building codes and guidelines.



- | | |
|--------------------------------|---------------------------------------|
| 1. Argeton tile plate | 6. Aluminium carrier rail, horizontal |
| 2. Clamp | 7. Insulation |
| 3. Aluminium profile, vertical | 8. Junction profile |
| 4. Aluminium cleat | |
| 5. Thermal separation | |

Notes

The details shown are simplified technical suggestions. The planning and realisation of the facade design are carried out building-specifically and in particular cases are to be adapted to the country building codes and guidelines.

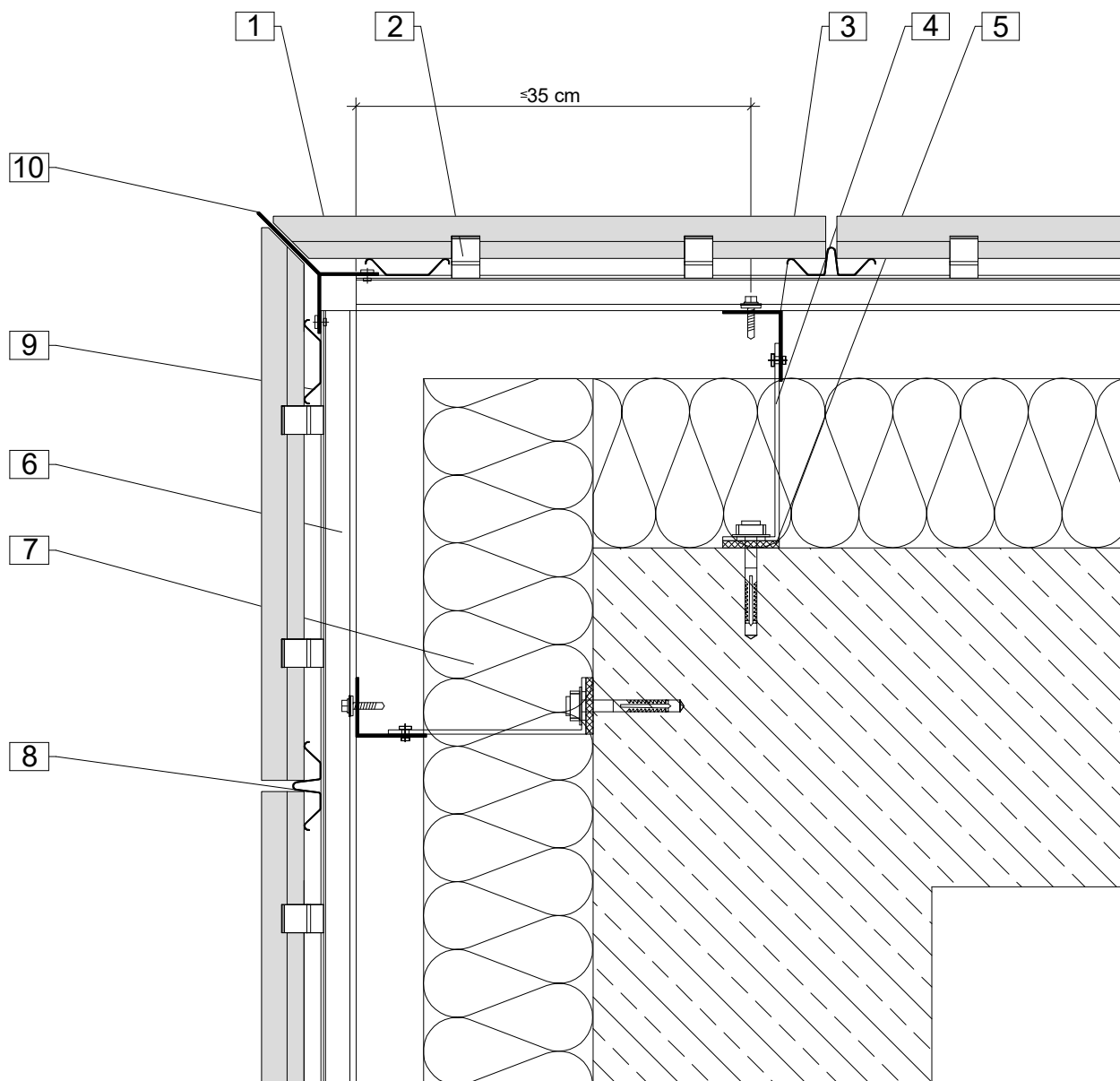


1. Argeton tile plate
2. Clamp
3. Aluminium profile, vertical
4. Aluminium cleat
5. Thermal separation

6. Aluminium carrier rail, horizontal
7. Insulation
8. Junction profile
9. Spring profile

Notes

The details shown are simplified technical suggestions. The planning and realisation of the facade design are carried out building-specifically and in particular cases are to be adapted to the country building codes and guidelines.

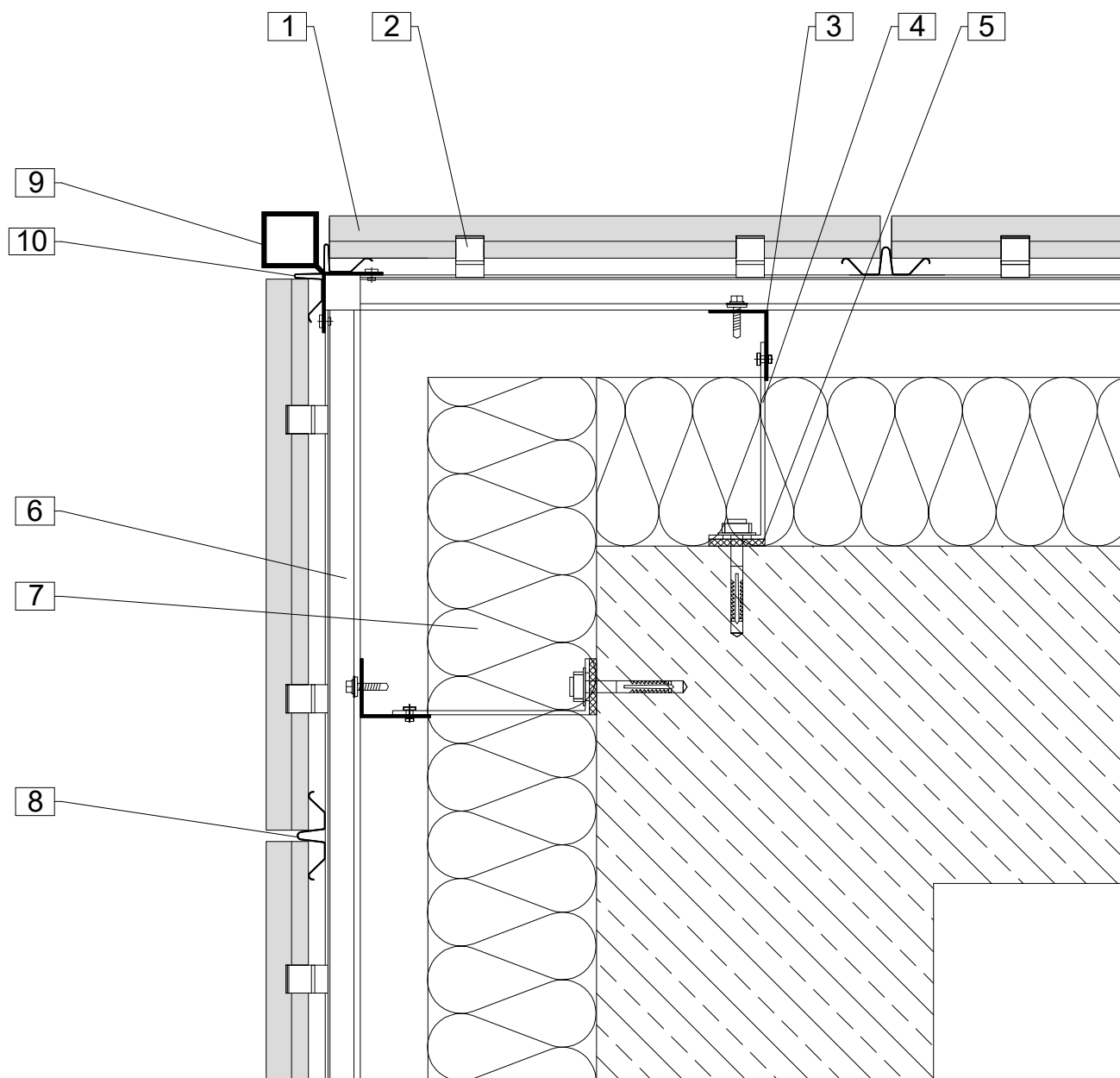


1. Argeton tile plate
2. Clamp
3. Aluminium profile, vertical
4. Aluminium cleat
5. Thermal separation

6. Aluminium carrier rail, horizontal
7. Insulation
8. Junction profile
9. Spring Profile
10. Corner profile

Notes

The details shown are simplified technical suggestions. The planning and realisation of the facade design are carried out building-specifically and in particular cases are to be adapted to the country building codes and guidelines.

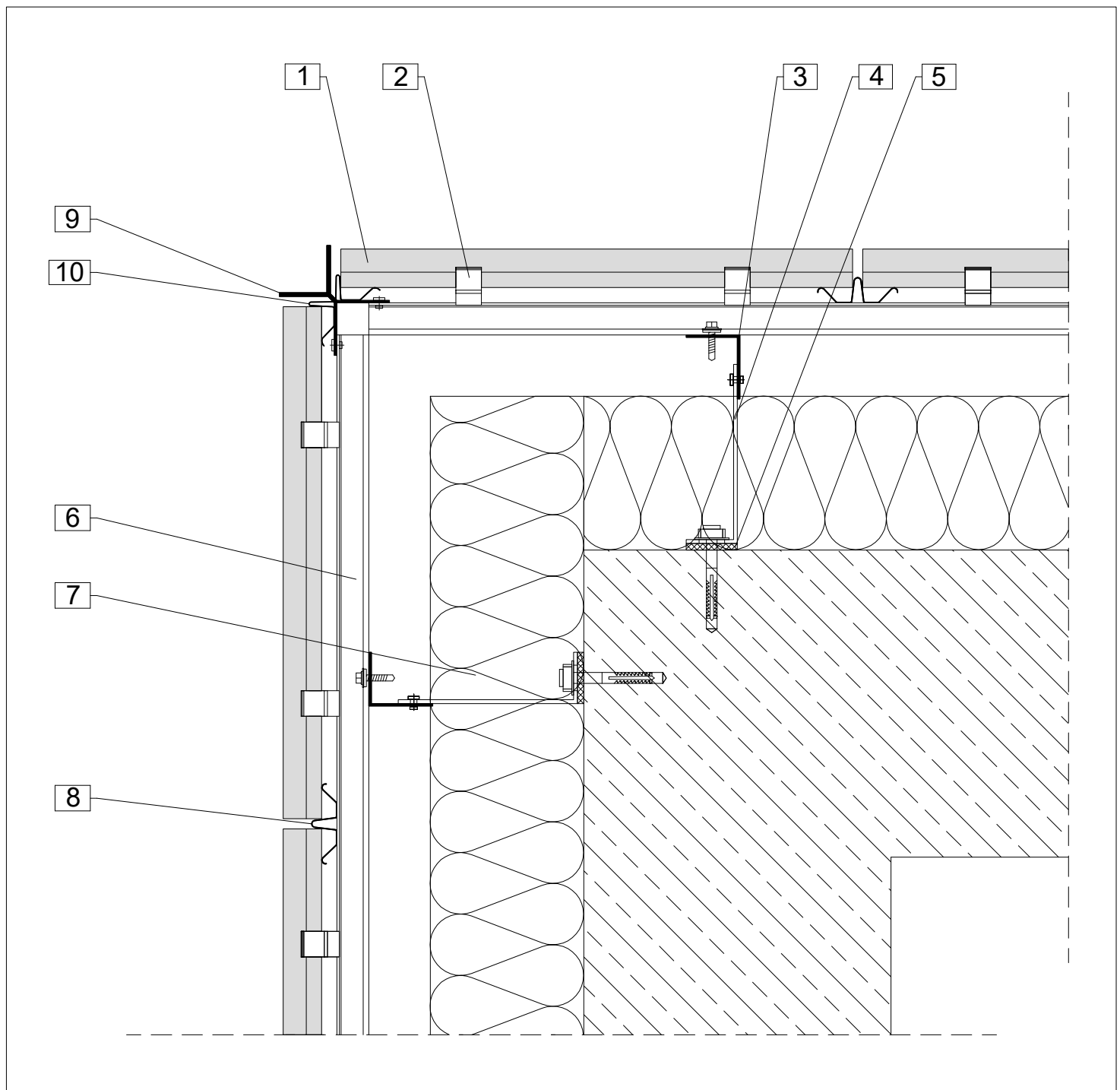


1. Argeton tile plate
2. Clamp
3. Aluminium profile, vertical
4. Aluminium cleat
5. Thermal separation

6. Aluminium carrier rail, horizontal
7. Insulation
8. Junction profile
9. Corner profile
10. Drainage abutment profile

Notes

The details shown are simplified technical suggestions. The planning and realisation of the facade design are carried out building-specifically and in particular cases are to be adapted to the country building codes and guidelines.

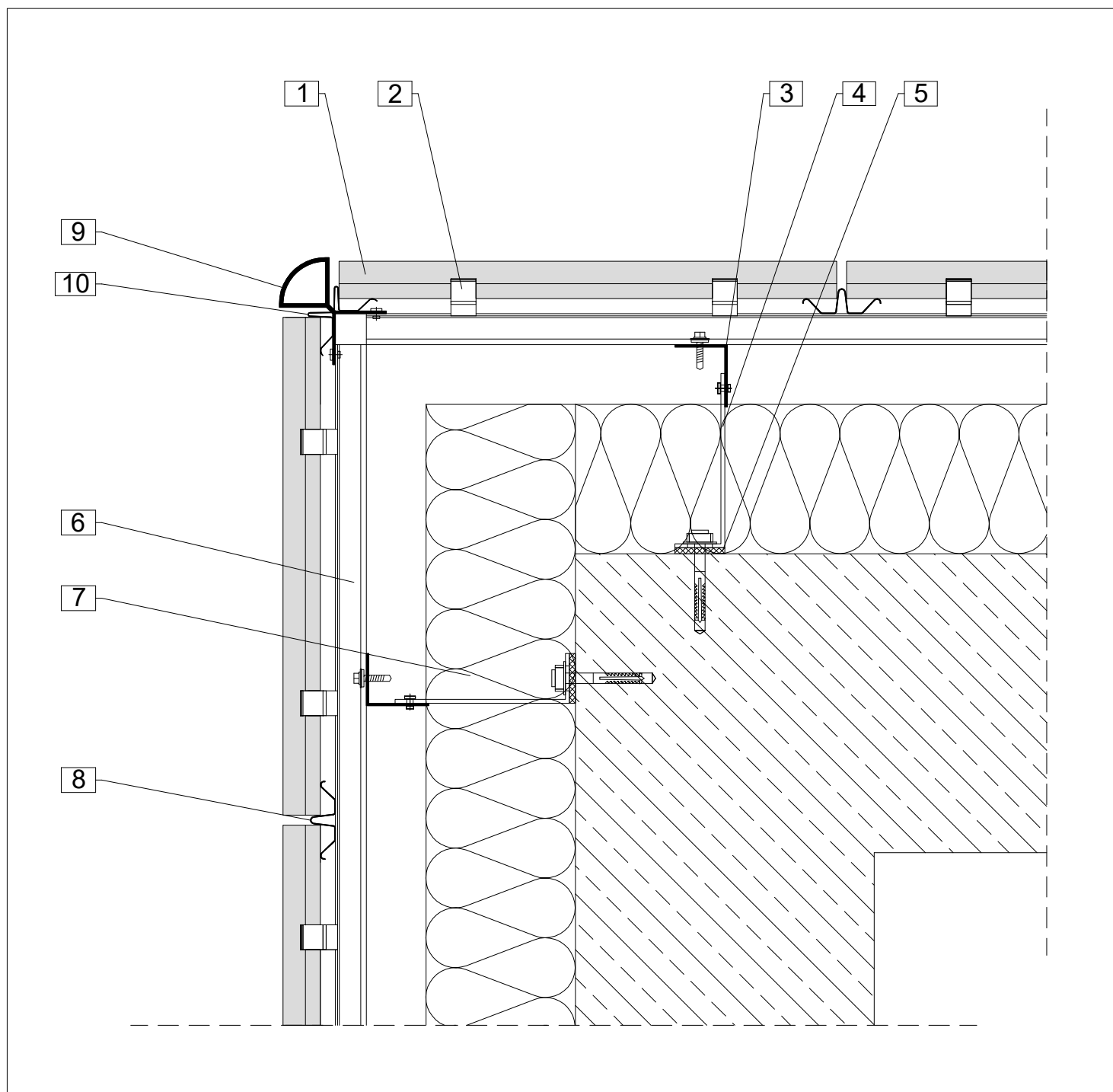


1. Argeton tile plate
2. Clamp
3. Aluminium profile, vertical
4. Aluminium cleat
5. Thermal separation

6. Aluminium carrier rail, horizontal
7. Insulation
8. Junction profile
9. Corner profile
10. Drainage abutment profile

Notes

The details shown are simplified technical suggestions. The planning and realisation of the facade design are carried out building-specifically and in particular cases are to be adapted to the country building codes and guidelines.

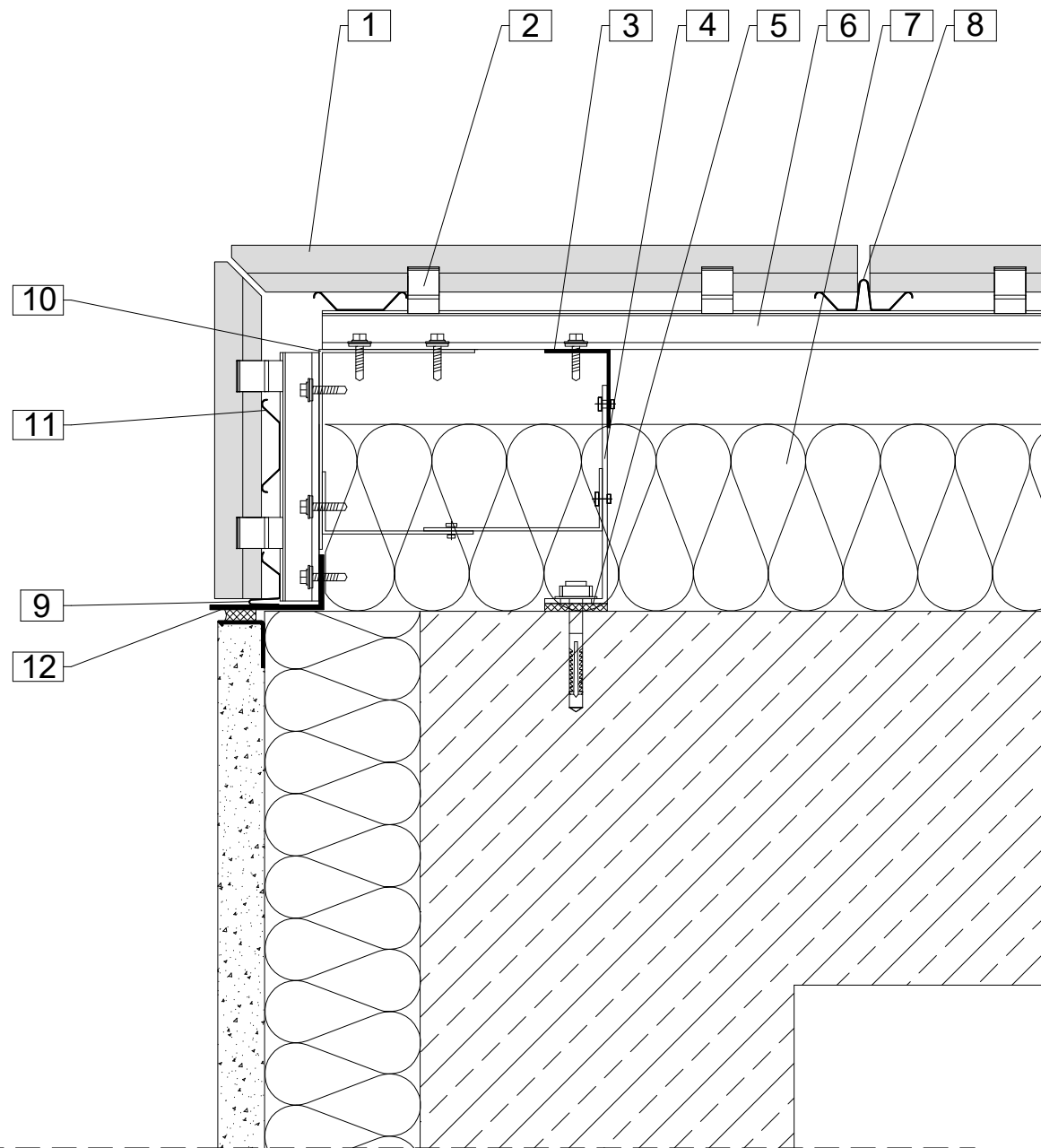


1. Argeton tile plate
2. Clamp
3. Aluminium profile, vertical
4. Aluminium cleat
5. Thermal separation

6. Aluminium carrier rail, horizontal
7. Insulation
8. Junction profile
9. Corner profile
10. Drainage abutment profile

Notes

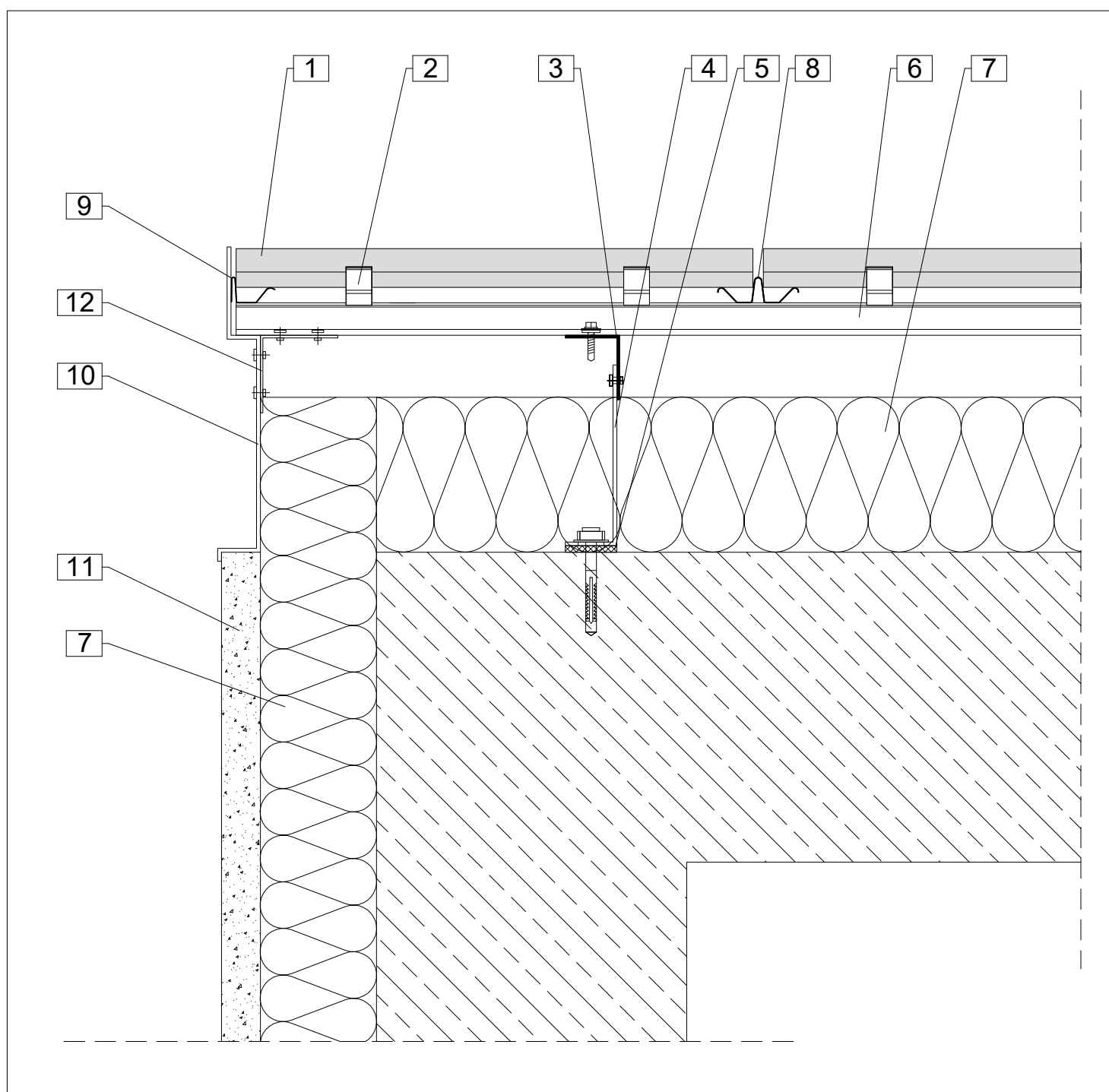
The details shown are simplified technical suggestions. The planning and realisation of the facade design are carried out building-specifically and in particular cases are to be adapted to the country building codes and guidelines.



- | | |
|---------------------------------------|------------------------------|
| 1. Argeton tile plate | 7. Insulation |
| 2. Clamp | 8. Junction profile |
| 3. Aluminium profile, vertical | 9. Drainage abutment profile |
| 4. Aluminium cleat | 10. Fastening angle |
| 5. Thermal separation | 11. Spring profile |
| 6. Aluminium carrier rail, horizontal | 12. Sheet, canted |

Notes

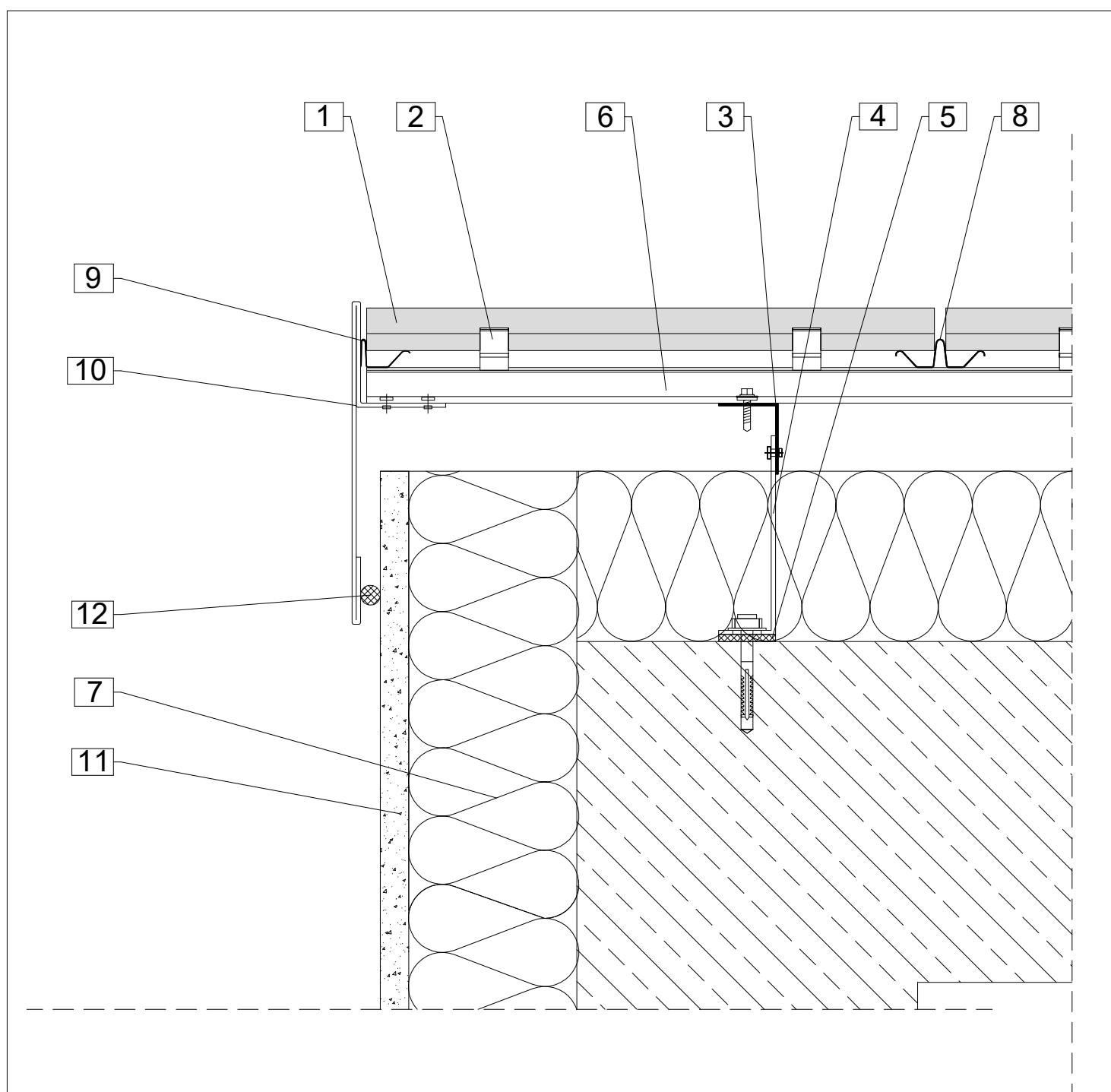
The details shown are simplified technical suggestions. The planning and realisation of the facade design are carried out building-specifically and in particular cases are to be adapted to the country building codes and guidelines.



- | | |
|---------------------------------------|------------------------------|
| 1. Argeton tile plate | 7. Insulation |
| 2. Clamp | 8. Junction profile |
| 3. Aluminium profile, vertical | 9. Drainage abutment profile |
| 4. Aluminium cleat | 10. Sheet, canted |
| 5. Thermal separation | 11. Plaster |
| 6. Aluminium carrier rail, horizontal | 12. Fastening angle |

Notes

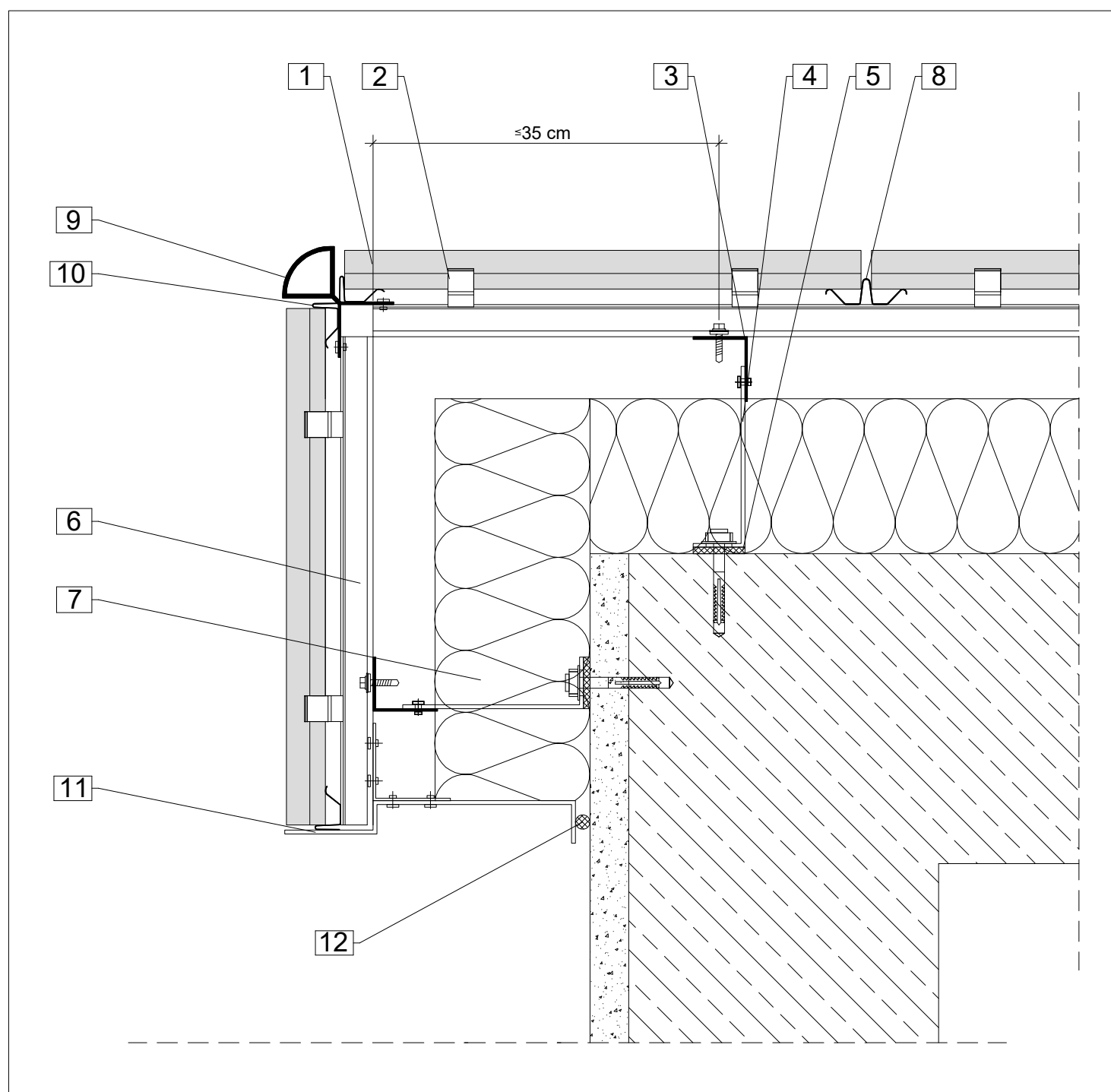
The details shown are simplified technical suggestions. The planning and realisation of the facade design are carried out building-specifically and in particular cases are to be adapted to the country building codes and guidelines.



- | | |
|---------------------------------------|------------------------------|
| 1. Argeton tile plate | 7. Insulation |
| 2. Clamp | 8. Junction profile |
| 3. Aluminium profile, vertical | 9. Drainage abutment profile |
| 4. Aluminium cleat | 10. Sheet, canted |
| 5. Thermal separation | 11. Plaster |
| 6. Aluminium carrier rail, horizontal | 12. Sealing tape |

Notes

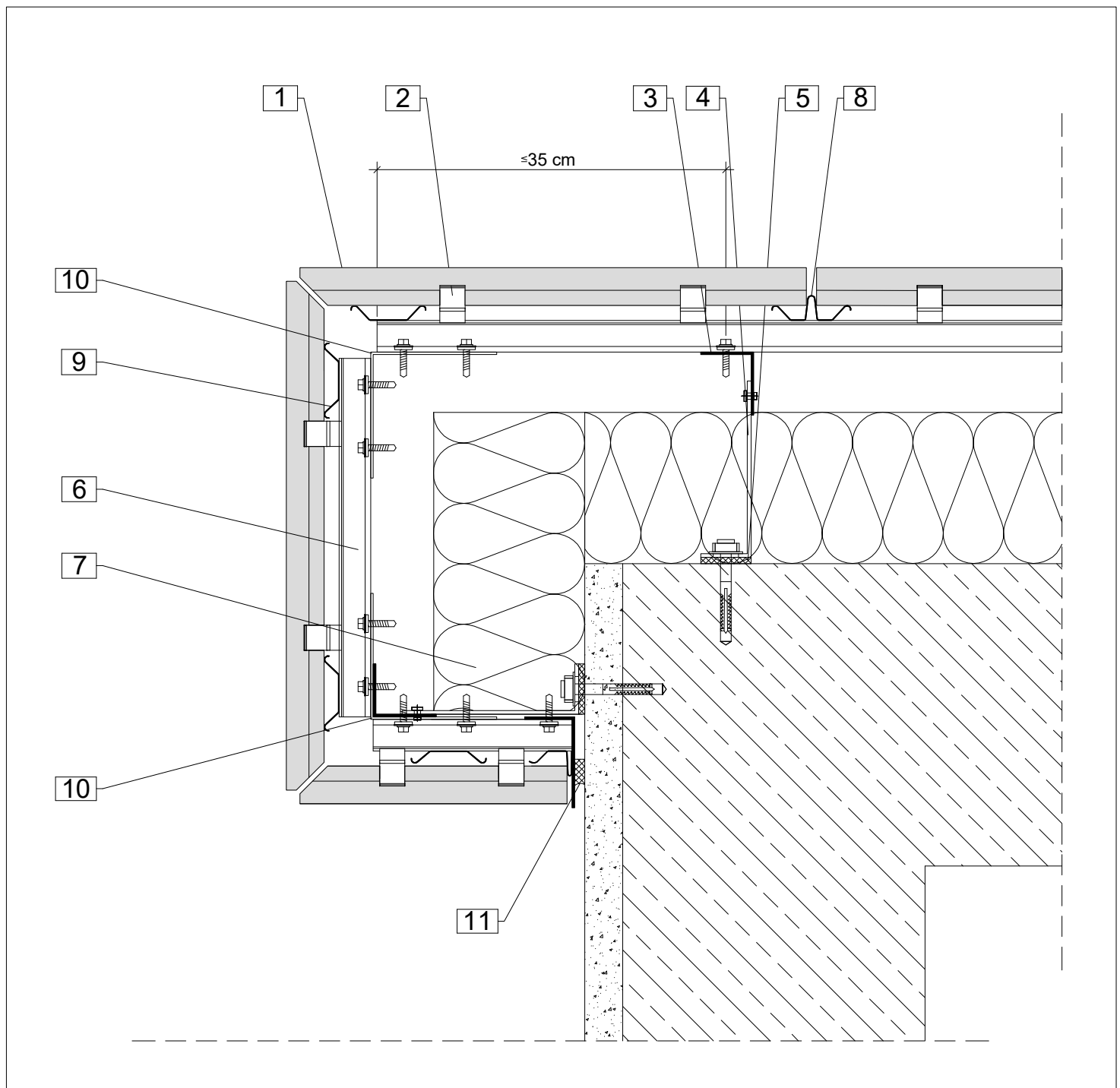
The details shown are simplified technical suggestions. The planning and realisation of the facade design are carried out building-specifically and in particular cases are to be adapted to the country building codes and guidelines.



- | | |
|---------------------------------------|-------------------------------|
| 1. Argeton tile plate | 7. Insulation |
| 2. Clamp | 8. Junction profile |
| 3. Aluminium profile, vertical | 9. Corner profile |
| 4. Aluminium cleat | 10. Drainage abutment profile |
| 5. Thermal separation | 11. Sheet, canted |
| 6. Aluminium carrier rail, horizontal | 12. Sealing tape |

Notes

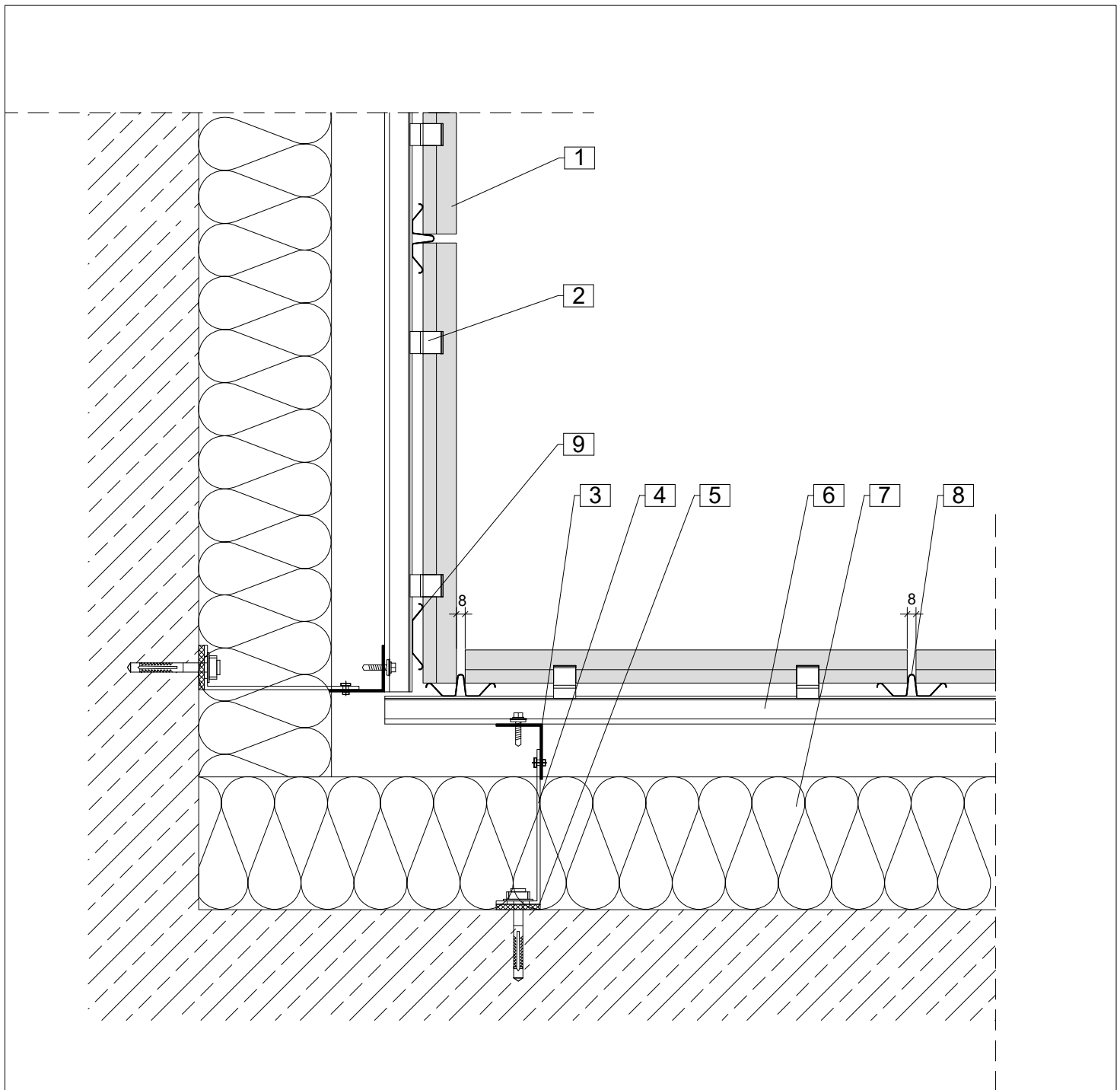
The details shown are simplified technical suggestions. The planning and realisation of the facade design are carried out building-specifically and in particular cases are to be adapted to the country building codes and guidelines.



- | | |
|--------------------------------|---------------------------------------|
| 1. Argeton tile plate | 6. Aluminium carrier rail, horizontal |
| 2. Clamp | 7. Insulation |
| 3. Aluminium profile, vertical | 8. Junction profile |
| 4. Aluminium cleat | 9. Spring profile |
| 5. Thermal separation | 10. Fastening angle |
| | 11. Sealing tape |

Notes

The details shown are simplified technical suggestions. The planning and realisation of the facade design are carried out building-specifically and in particular cases are to be adapted to the country building codes and guidelines.

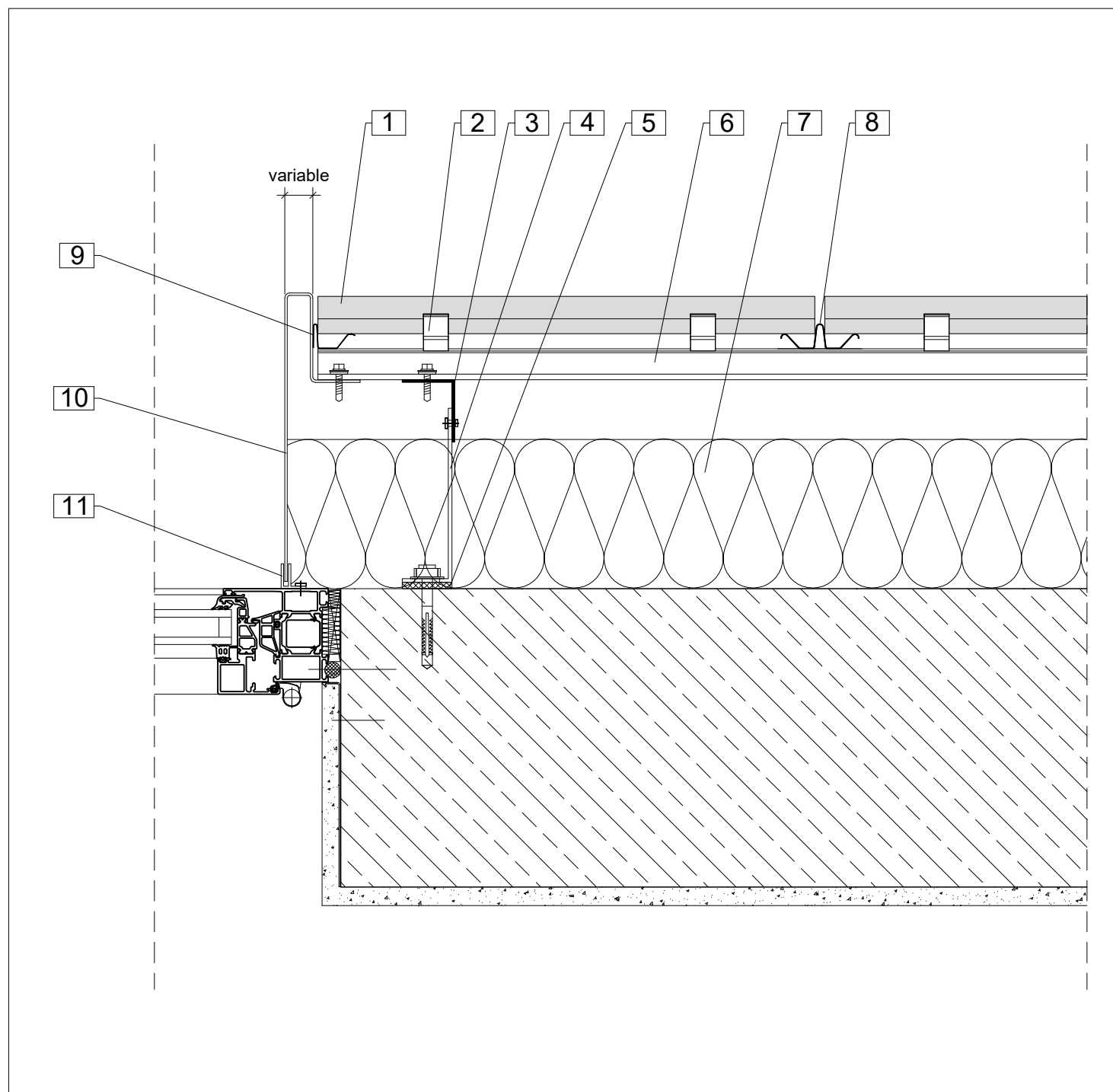


1. Argeton tile plate
2. Clamp
3. Aluminium profile, vertical
4. Aluminium cleat
5. Thermal separation

6. Aluminium carrier rail, horizontal
7. Insulation
8. Junction profile
9. Spring profile

Notes

The details shown are simplified technical suggestions. The planning and realisation of the facade design are carried out building-specifically and in particular cases are to be adapted to the country building codes and guidelines.

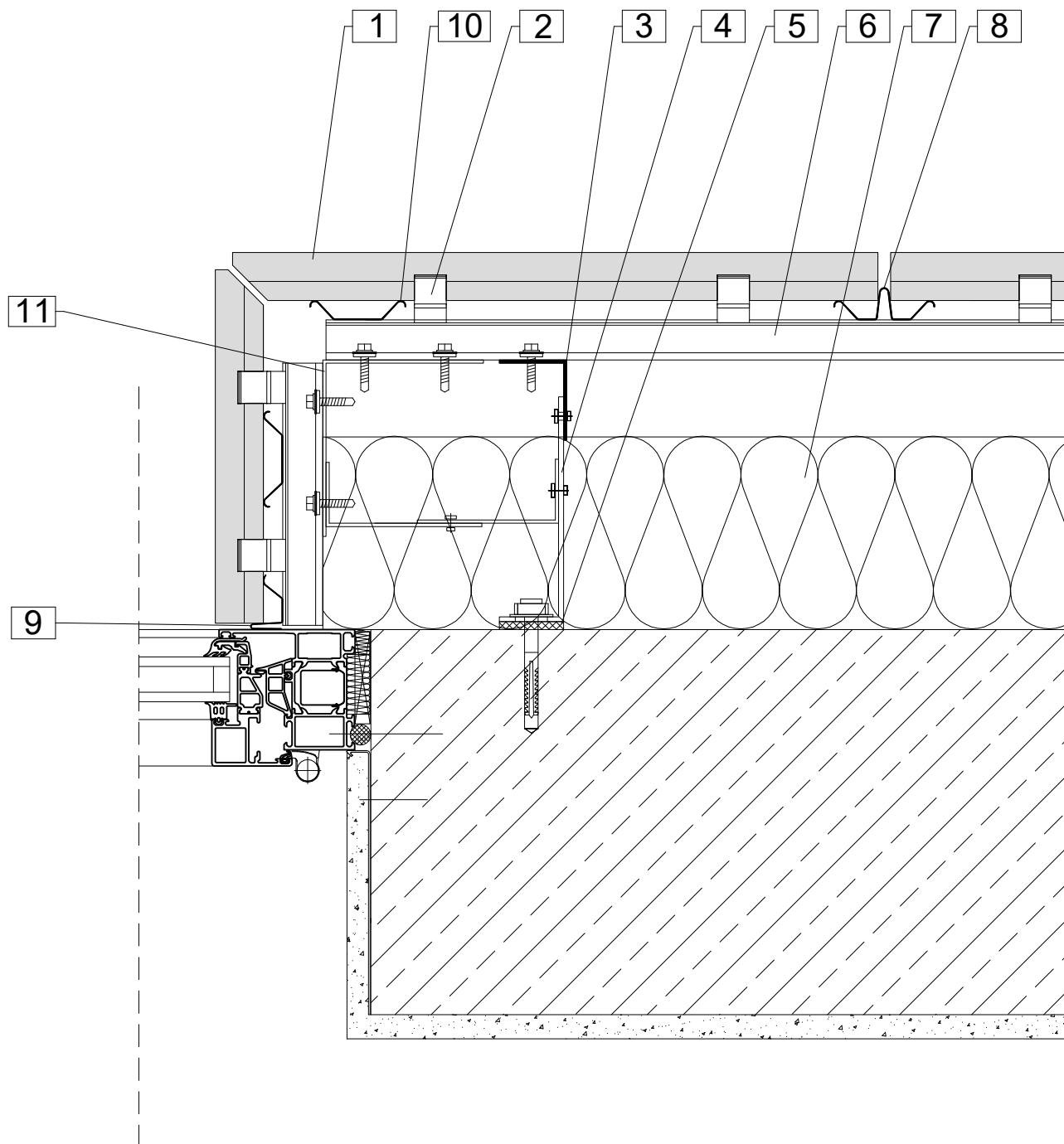


1. Argeton tile plate
2. Clamp
3. Aluminium profile, vertical
4. Aluminium cleat
5. Thermal separation
6. Aluminium carrier rail, horizontal

7. Insulation
8. Junction profile
9. Drainage abutment profile
10. Reveal sheet, canted
11. F insertion profile

Notes

The details shown are simplified technical suggestions. The planning and realisation of the facade design are carried out building-specifically and in particular cases are to be adapted to the country building codes and guidelines.



1. Argeton tile plate
2. Clamp
3. Aluminium profile, vertical
4. Aluminium cleat
5. Thermal separation
6. Aluminium carrier rail, horizontal

7. Insulation
8. Junction profile
9. Drainage abutment profile
10. Spring profile
11. Fastening angle

Notes

The details shown are simplified technical suggestions. The planning and realisation of the facade design are carried out building-specifically and in particular cases are to be adapted to the country building codes and guidelines.