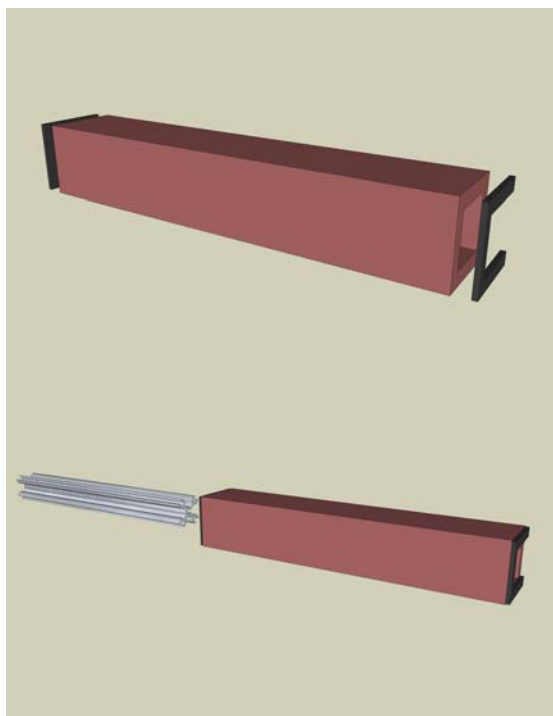


## BARRO with X-Profile



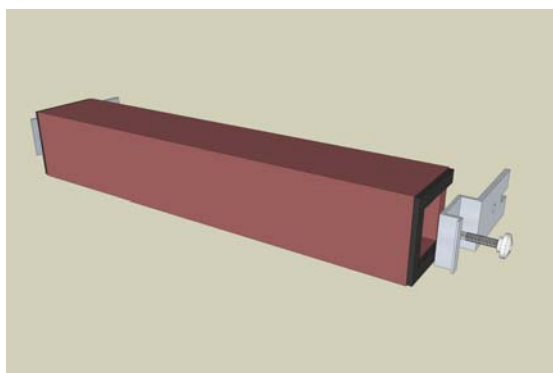
### Installation

1. Fixation of two EPDM-Pads

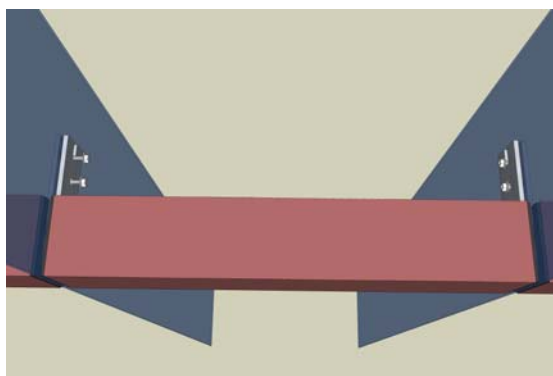
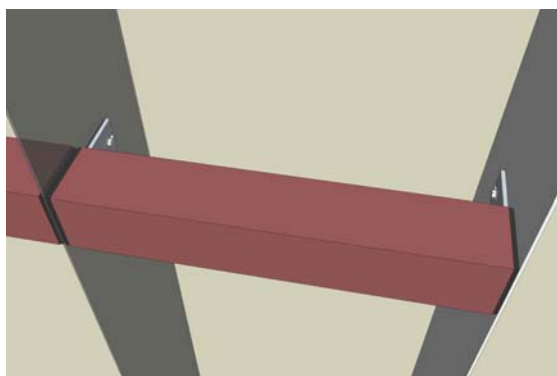
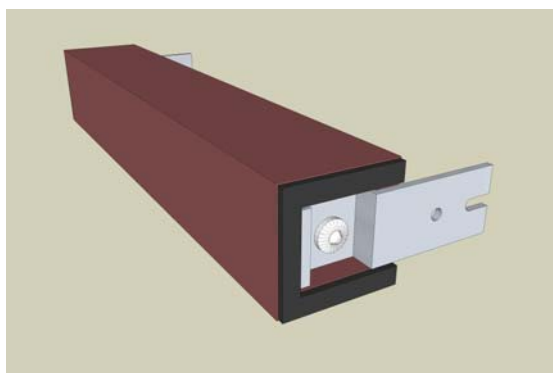


2. Inserting the X-profile

3. Fixation of two aluminium supports with one BARRO-screw each



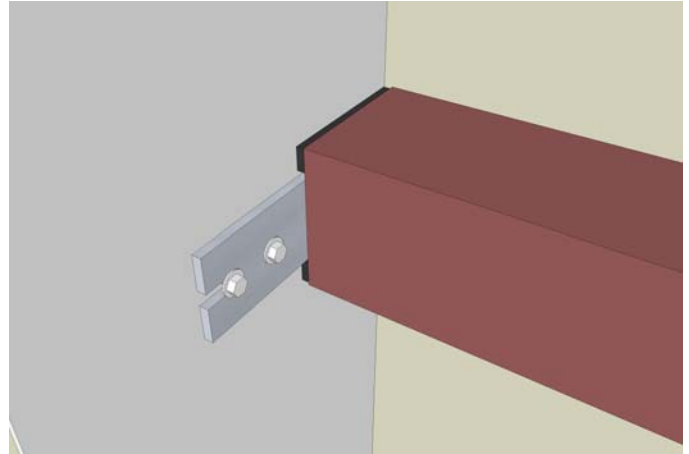
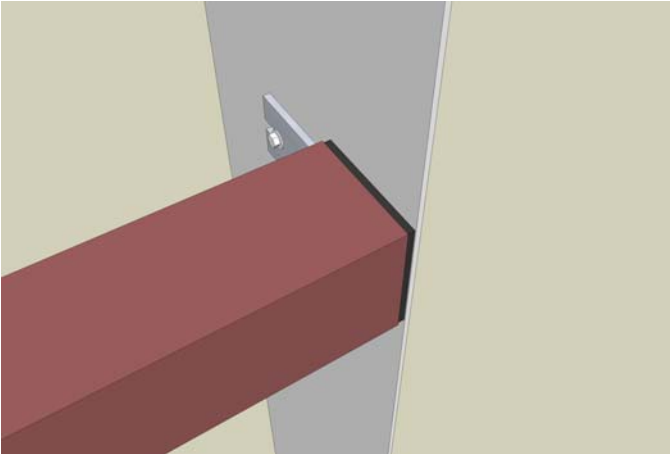
4. Installation of the BARRO-system at vertical support profiles



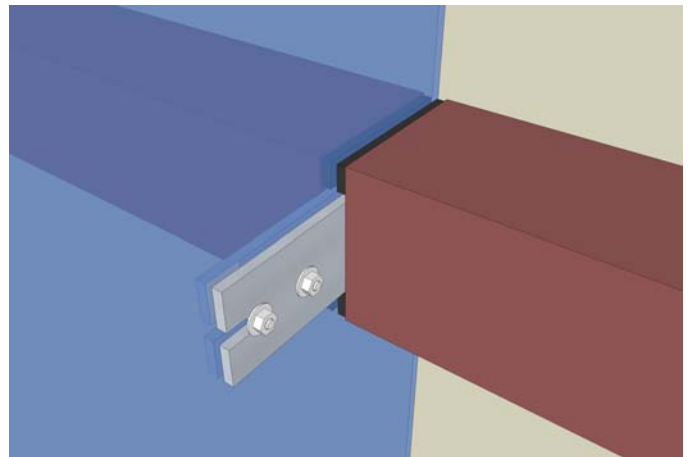
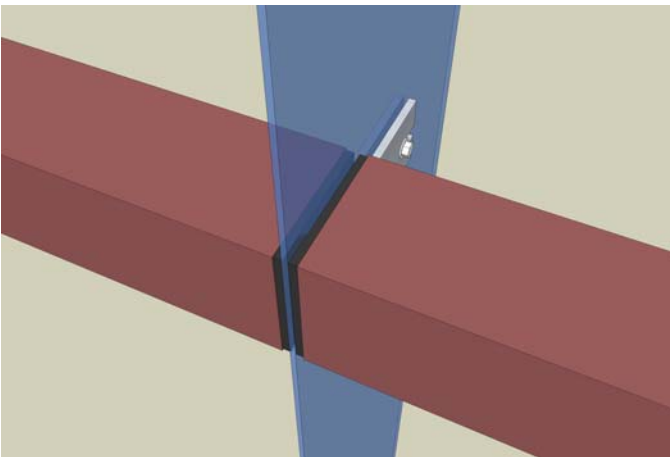
## BARRO

**System: BARRO with X-Profile**

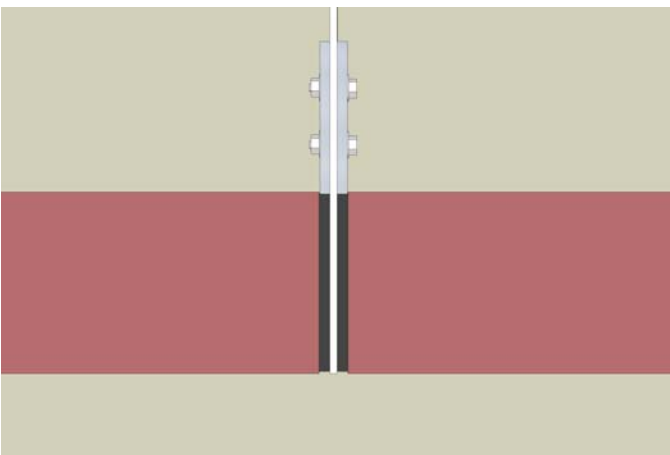
**Single Support:**



**Double Support:**



**Top View:**



**Front View:**

